



Elthorne Avenue, W7

£975,000

A fantastic family home set over three floors with a secluded garden. Excellent transport links and Ofsted outstanding school to choose from locally.

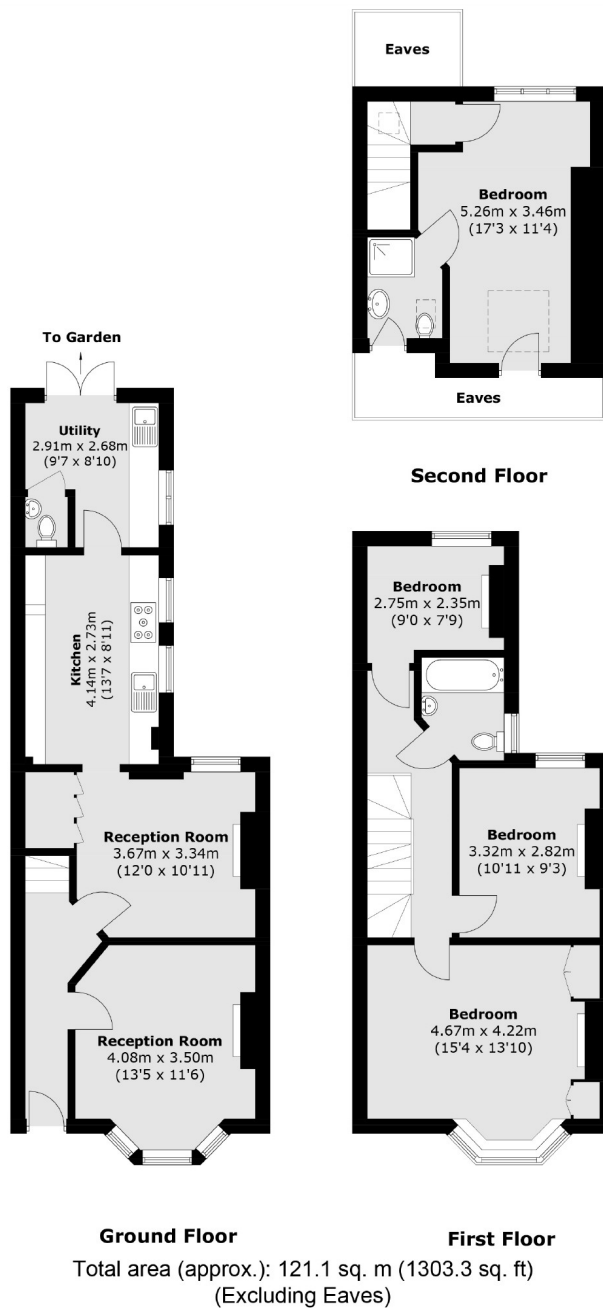


The ground floor accommodation offers two large reception rooms, kitchen and separate utility. The first floor comprises two double bedrooms, additional single bedroom and family bathroom. The loft has been tastefully converted to include the principal bedroom with en-suite shower-room. A sun-trapped secluded garden to enjoy a number of ways.

Hanwell & West Ealing stations (Elizabeth Line) within walking distance providing express access to central London. Boston Manor & Northfields station (both Piccadilly) also local options. Ofsted outstanding schools locally including Fielding, Oaklands & Elthorne High. Local parks are Elthorne, Lammas & Walpole.

- Ofsted Outstanding Schools • Secluded Garden • Excellent Transport Links •
 - Local Parks • Four Bedrooms • Beautiful Condition •
-





Robertson Smith & Kempson Northfields Sales
 116 Northfield Avenue,
 London, W13 9RT
 020 8566 2340
northfieldssales@robertsonsmithandkempson.co.uk

Energy Rating: D. We aim to make our particulars both accurate and reliable. However they are not guaranteed; nor do they form part of an offer or contract. If you require clarification on any points then please contact us, especially if you're traveling some distance to view. Please note that appliances and heating systems have not been tested and therefore no warranties can be given as to their good working order.