



Leyborne Avenue, W13

£1,000,000

*** Offers In Excess Of ***

An extended three bedroom end of terrace family home, attractively offered onto the market with no onward chain.

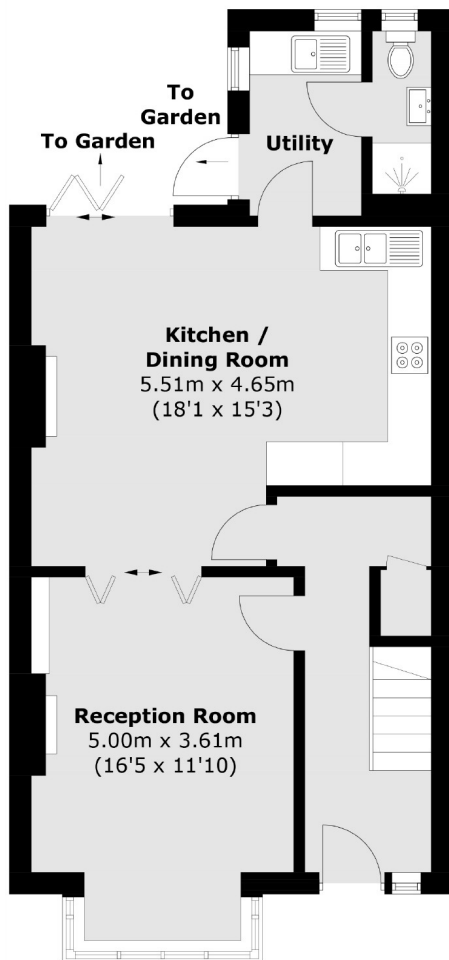


This family home offers a front reception room, extended ground floor providing a large kitchen/diner which leads to the sun-trapped garden. The first floor accommodation comprises three bedrooms and a family bathroom. Potential to extend to the loft like many neighbouring properties have done (STPP).

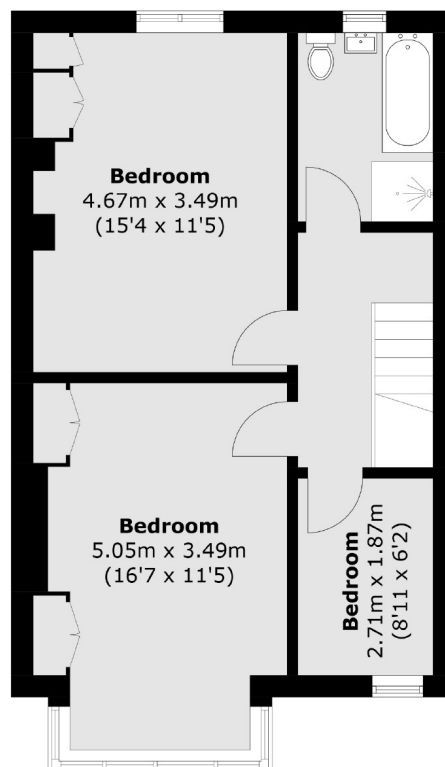
Ideally located for all the local parks including Lammas & Walpole. Excellent transport links including West Ealing & Ealing Broadway stations (Elizabeth Line) as well as Northfields station (Piccadilly) providing ideal connections to get to central London. Well regarded schools locally to choose from.

- Three Bedrooms • End Of Terrace • Secluded Landscaped Garden •
- No Onward Chain • Excellent Transport Links • Local Parks •





Ground Floor



First Floor

Total area (approx.): 109.3 sq. m (1,176.5 sq. ft)

Robertson Smith & Kempson Northfields Sales
116 Northfield Avenue,
London, W13 9RT
020 8566 2340
northfieldssales@robertsonsmithandkempson.co.uk

Energy Rating: D. We aim to make our particulars both accurate and reliable. However they are not guaranteed; nor do they form part of an offer or contract. If you require clarification on any points then please contact us, especially if you're traveling some distance to view. Please note that appliances and heating systems have not been tested and therefore no warranties can be given as to their good working order.