



Jersey Road, W7

£425,000

A large one double bedroom ground floor flat with a sun-trapped secluded garden and offered to the market with a long lease.

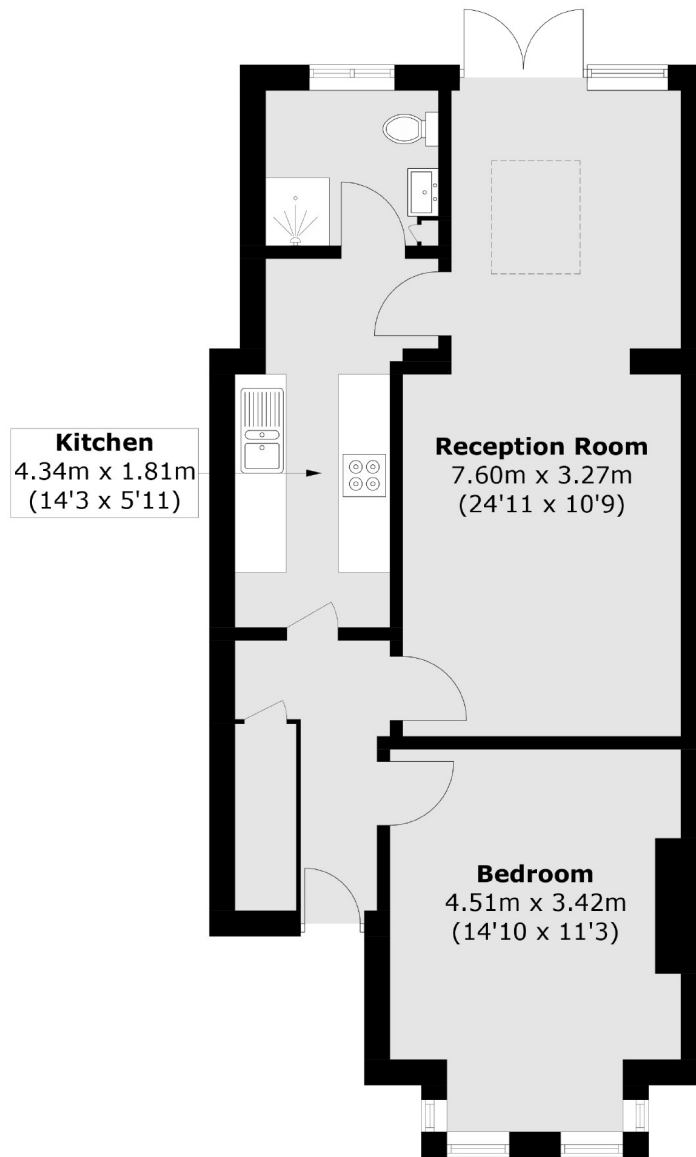


Offering over 600 sq ft, this large one bed includes a double bedroom to the front, kitchen, bathroom and double reception room which leads directly to the secluded garden. The flat is filled with natural light throughout.

Ideally located for Boston Manor & Northfields stations (Piccadilly) aswell as Hanwell station (Elizabeth Line) which provides excellent links to central London. Local parks to enjoy include Elthorne, Walpole & Lammas park.

- One Double Bedroom • Sun-Trapped Garden • Long Lease •
- Local Parks • Excellent Transport Links • Beautiful Condition •





Total area (approx.): 57.4 sq. m (617.8 sq. ft)

Robertson Smith & Kempson Northfields Sales
116 Northfield Avenue,
London, W13 9RT
020 8566 2340
northfieldssales@robertsonsmithandkempson.co.uk

Energy Rating: C. We aim to make our particulars both accurate and reliable. However they are not guaranteed; nor do they form part of an offer or contract. If you require clarification on any points then please contact us, especially if you're traveling some distance to view. Please note that appliances and heating systems have not been tested and therefore no warranties can be given as to their good working order.