



Paddlers Avenue, TW8

£570,000

A stunning two double bedroom, two bathroom top floor flat with a large sun-trapped balcony. A must for early viewing!

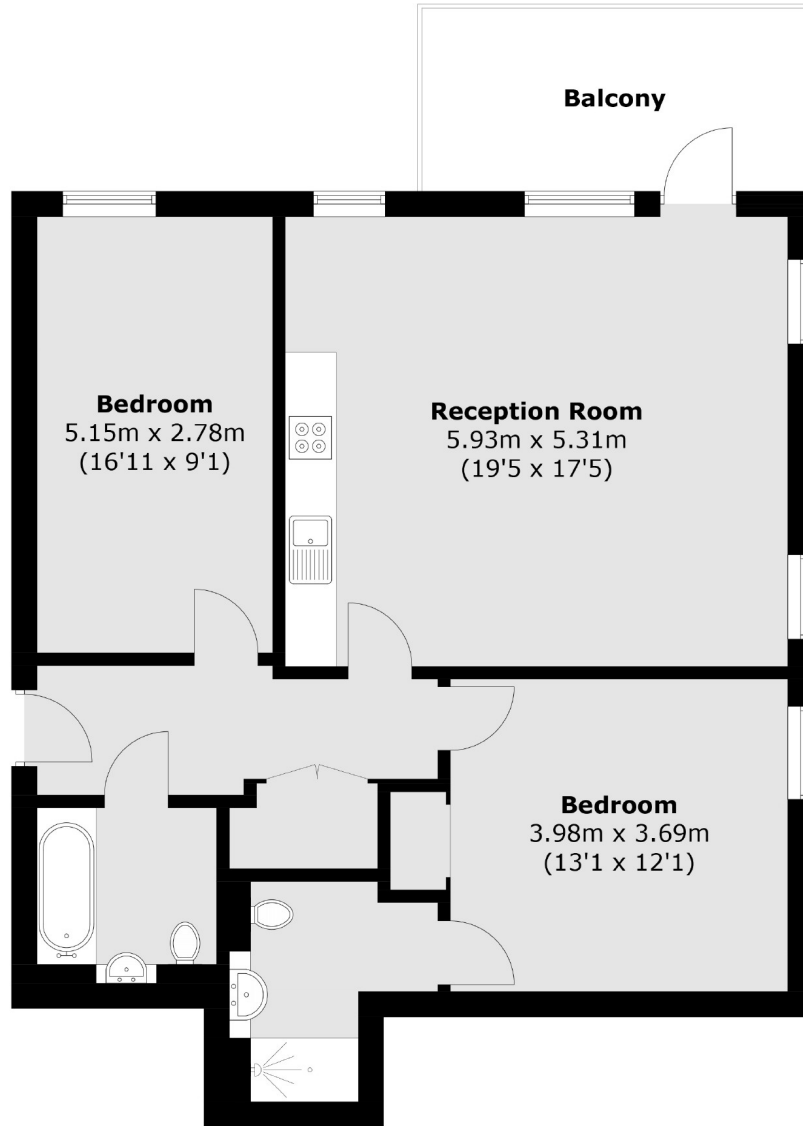


Two large double bedrooms (one of which is en-suite shower-room), family bathroom and a large kitchen/diner with a secluded balcony.

Brentford, Syon Lane & Boston Manor stations all within one mile provide excellent transport links. A choice of well regarded schools locally including the Ofsted outstanding Gunnersbury catholic school.

- Top Floor • Two Double Bedrooms • Two Bathrooms •
- Large Private Balcony • High Specification • Long Lease •





Total area (approx.): 83.1 sq. m (894.5 sq. ft)
Balcony(approx.): 9.9 sq. m (106.6 ft)

Robertson Smith & Kempson Northfields Sales
116 Northfield Avenue,
London, W13 9RT
020 8566 2340
northfieldssales@robertsonsmithandkempson.co.uk

Energy Rating: B. We aim to make our particulars both accurate and reliable. However they are not guaranteed; nor do they form part of an offer or contract. If you require clarification on any points then please contact us, especially if you're traveling some distance to view. Please note that appliances and heating systems have not been tested and therefore no warranties can be given as to their good working order.