

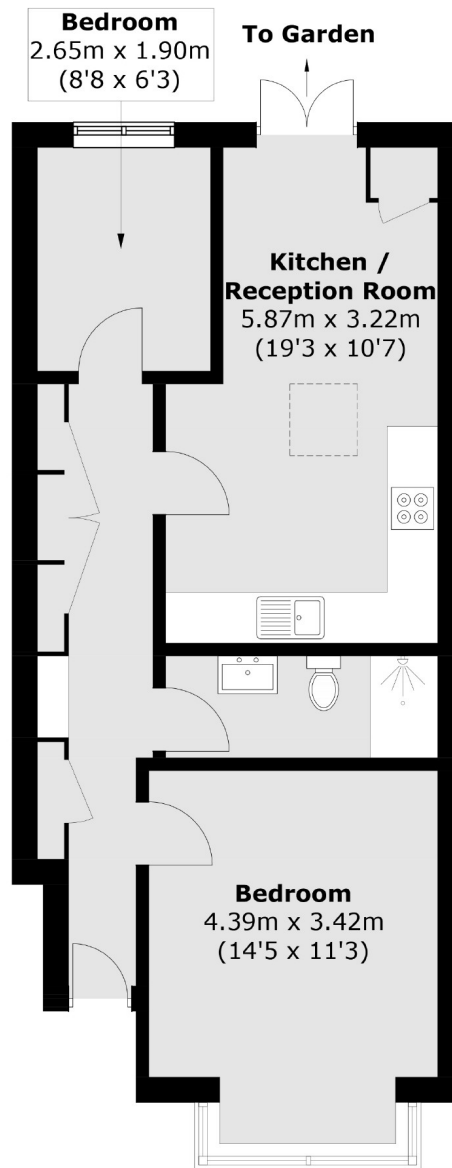


## Bernard Avenue, W13

£500,000

\*\*\*O.I.E.O\*\*\* An extended two double bedroom ground floor flat with a large secluded south-facing garden, attractively offered onto the market with no onward chain.

Ideally located for Fielding primary & Elthorne High schools (both Ofsted outstanding). West Ealing (Elizabeth Line) & Northfields (Piccadilly) stations within walking distance. Lots of local parks to enjoy including Lammas, Walpole & Elthorne.



Total area (approx.): 52.1 sq. m (560.8 sq. ft)

Robertson Smith & Kempson Northfields Sales  
116 Northfield Avenue,  
London, W13 9RT  
020 8566 2340  
[northfieldssales@robertsonsmithandkempson.co.uk](mailto:northfieldssales@robertsonsmithandkempson.co.uk)

Energy Rating: . We aim to make our particulars both accurate and reliable. However they are not guaranteed; nor do they form part of an offer or contract. If you require clarification on any points then please contact us, especially if you're traveling some distance to view. Please note that appliances and heating systems have not been tested and therefore no warranties can be given as to their good working order.