



St. Kilda Road, W13

£975,000

*** Viewings commence Saturday 17th ***

A stunning five bedroom family home arranged over three floors with a landscaped sun trapped garden. Perfectly located for well regarded schools, parks and a choice of excellent transport links.

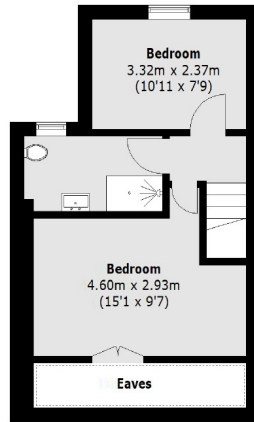


The ground floor offers a front reception, and a large open kitchen/diner leading to the secluded sun trapped garden. The first floor offers three double bedrooms and a family bathroom. The loft has been tastefully converted to include two further bedrooms and a shower-room.

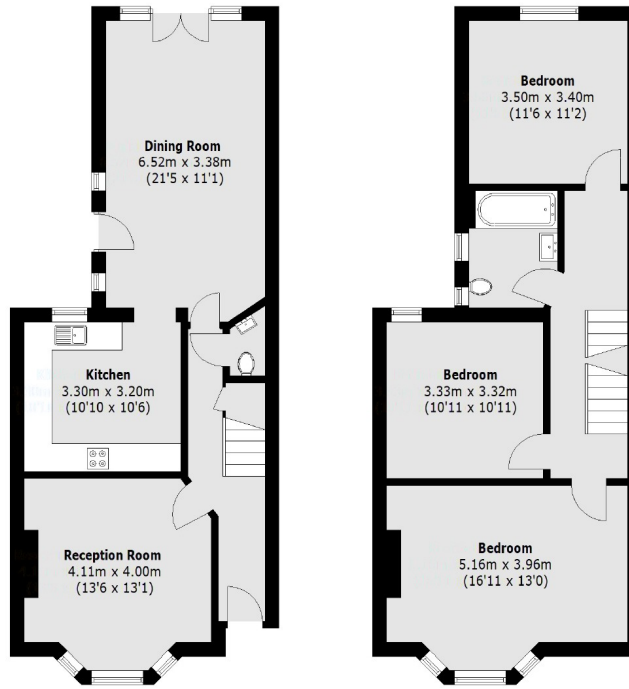
Ideally located for all the local parks including Lammas, Walpole & Elthorne. Well regarded schools to choose from locally including the Ofsted outstanding Oaklands primary.

- Five Bedrooms • Stunning Condition • Secluded Garden •
- Over 1500 Sq Ft • Excellent Transport Links • Local Parks •





Second Floor



Ground Floor

First Floor

Total area (approx.): 146.4 sq. m (1,575.8 sq. ft)
(Excluding Eaves)

Robertson Smith & Kempson Northfields Sales
116 Northfield Avenue,
London, W13 9RT
020 8566 2340
northfieldssales@robertsonsmithandkempson.co.uk

Energy Rating: E. We aim to make our particulars both accurate and reliable. However they are not guaranteed; nor do they form part of an offer or contract. If you require clarification on any points then please contact us, especially if you're traveling some distance to view. Please note that appliances and heating systems have not been tested and therefore no warranties can be given as to their good working order.