



Clitherow Road, TW8

£699,950

A large three double bedroom family home with secluded garden and attractively offered onto the market with no onward chain.

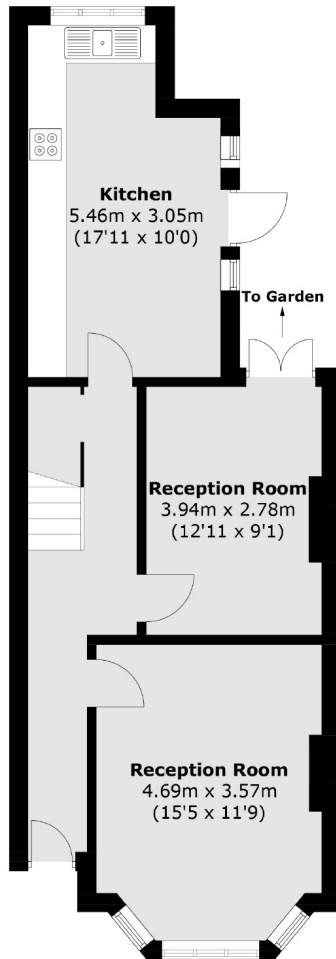


Offering a large footprint with huge potential to extend, the accommodation on the ground floor offers two large reception rooms and kitchen. The rear reception and kitchen have direct access to the secluded garden. The first floor offers three double bedrooms and family bathroom. An abundance of storage & character throughout.

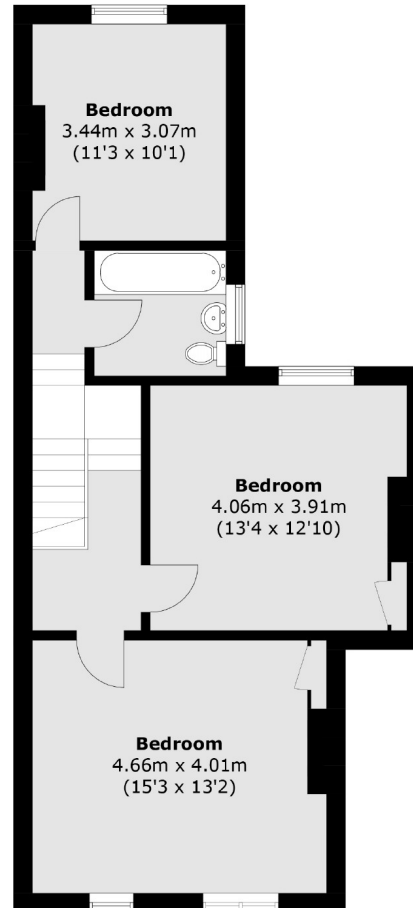
Ideally located for many well regarded schools including the Ofsted outstanding Gunnersbury catholic school. Local parks to enjoy including Boston Manor park.

- Three Double Bedrooms • No Onward Chain • Secluded Garden •
- Potential To Extend (STPP) • Well Regarded Schools • Locals Parks •





Ground Floor



First Floor

Total area (approx.): 114.7 sq. m (1,234.5 sq. ft)

Robertson Smith & Kempson Northfields Sales
116 Northfield Avenue,
London, W13 9RT
020 8566 2340
northfieldssales@robertsonsmithandkempson.co.uk

Energy Rating: D. We aim to make our particulars both accurate and reliable. However they are not guaranteed; nor do they form part of an offer or contract. If you require clarification on any points then please contact us, especially if you're traveling some distance to view. Please note that appliances and heating systems have not been tested and therefore no warranties can be given as to their good working order.