



Seaford Road, W13

£475,000

*** Offers In Excess Of ***

A beautiful two bedroom first floor flat with direct access to the private garden, attractively offered onto the market with no onward chain and share of freehold

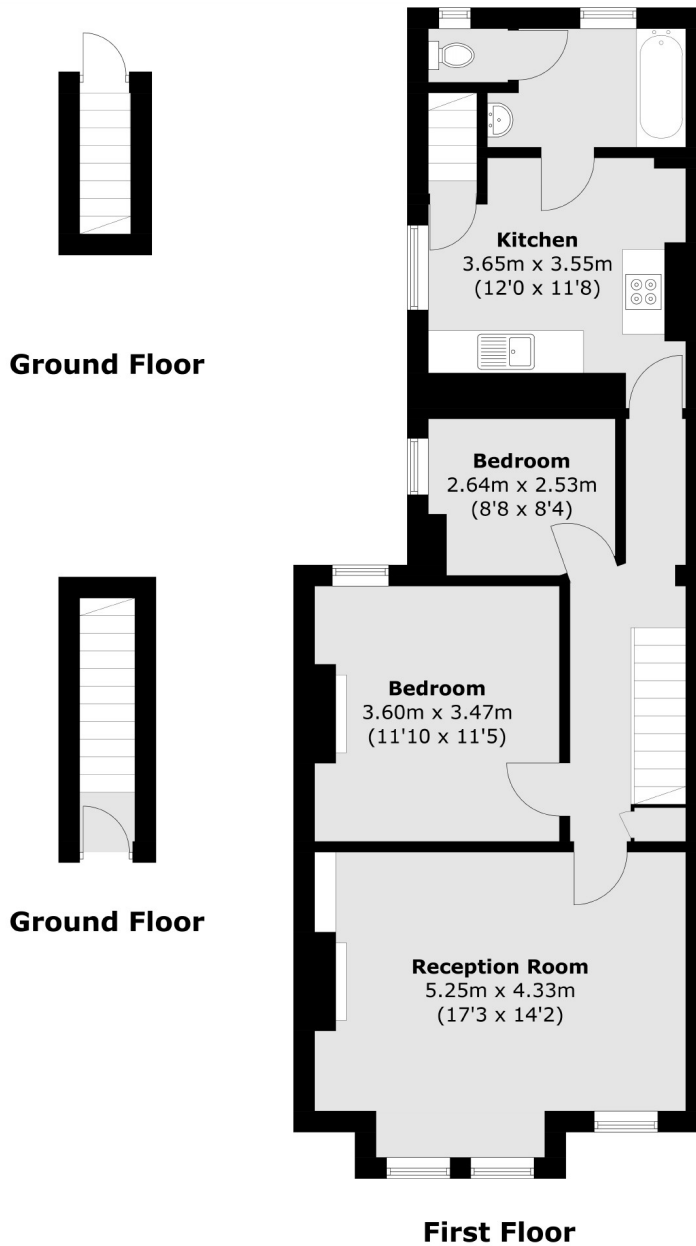


Nearly 800 sq ft, this two bedroom flat presented in excellent condition offers a large front reception room, double bedroom, single bedroom, kitchen and bathroom.

Ideally located for Elizabeth Line at West Ealing station providing excellent transport links to central London. Local parks including Lammas, Walpole & Elthorne.

- Two Bedrooms • Share Of Freehold • No Onward Chain •
- Private Garden • Elizabeth Line (West Ealing) • Local Parks •





Total area (approx.): 73.8 sq. m (794.3 sq. ft)

Robertson Smith & Kempson Northfields Sales
116 Northfield Avenue,
London, W13 9RT
020 8566 2340
northfieldssales@robertsonsmithandkempson.co.uk

Energy Rating: C. We aim to make our particulars both accurate and reliable. However they are not guaranteed; nor do they form part of an offer or contract. If you require clarification on any points then please contact us, especially if you're traveling some distance to view. Please note that appliances and heating systems have not been tested and therefore no warranties can be given as to their good working order.