



Weymouth Avenue, W5

£1,050,000

A four bedroom family home set over three floors and offering over 1330 sq ft with a large secluded garden.

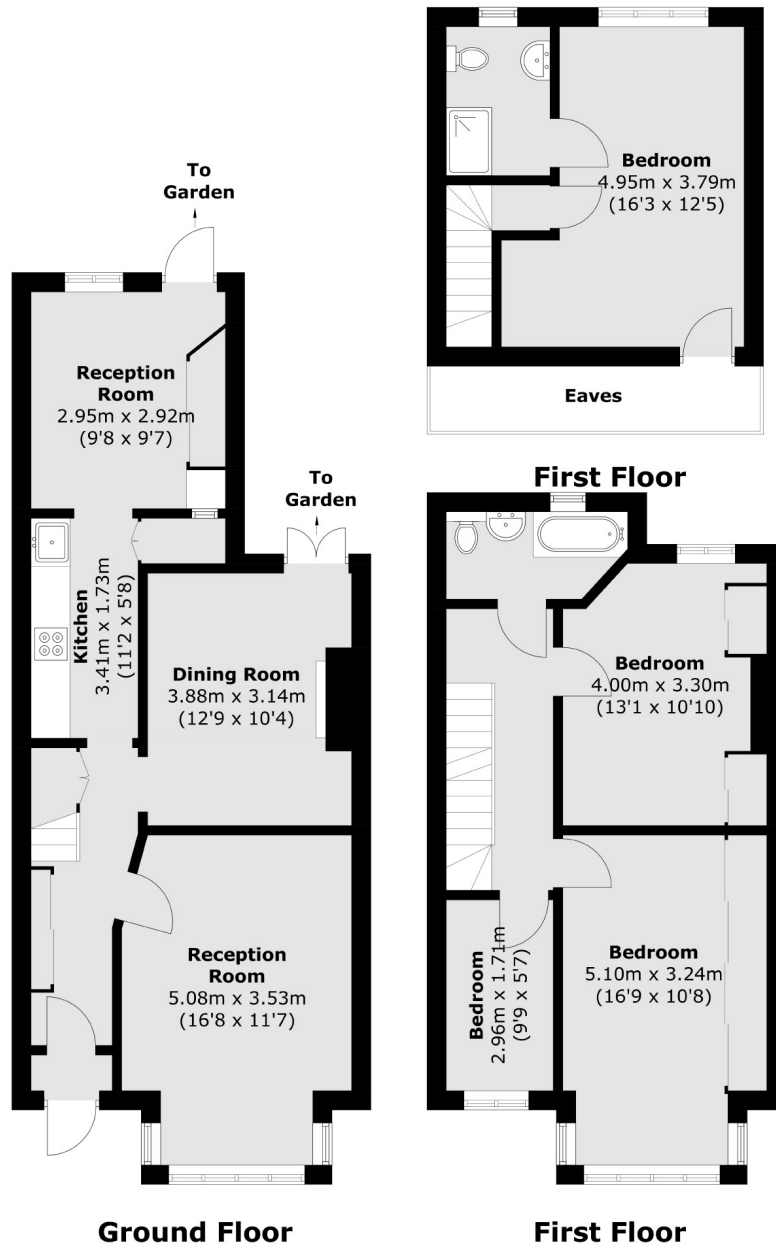


Excellent ground floor living space including a large front reception room, additional dining room (with access to the garden) and kitchen /diner to the rear again leading to the garden. Two double bedrooms, single bedroom and family bathroom on the first floor. The loft has been tastefully converted to include the principle bedroom and en-suite shower-room.

Ideally located for a range of well regarded schools including Little Ealing, Mount Carmel & The Grange. Local parks to enjoy include Lammas, Walpole & Gunnersbury Park.

- Four Bedroom • Secluded Garden • Well Regarded Schools •
- Excellent Transport Links • Local Parks • Shops & Restaurants •





Robertson Smith & Kempson Northfields Sales
 116 Northfield Avenue,
 London, W13 9RT
 020 8566 2340
northfieldssales@robertsonsmithandkempson.co.uk

Energy Rating: C. We aim to make our particulars both accurate and reliable. However they are not guaranteed; nor do they form part of an offer or contract. If you require clarification on any points then please contact us, especially if you're traveling some distance to view. Please note that appliances and heating systems have not been tested and therefore no warranties can be given as to their good working order.