



Boston Manor Road, TW8

£850,000

*** Offers In Excess Of ***

A beautiful four bedroom family home set back from the road with a large secluded west facing garden which includes a lovely sun-trapped decking area. To the rear of the garden is a super useful garage for storage/gym or play area for kids.

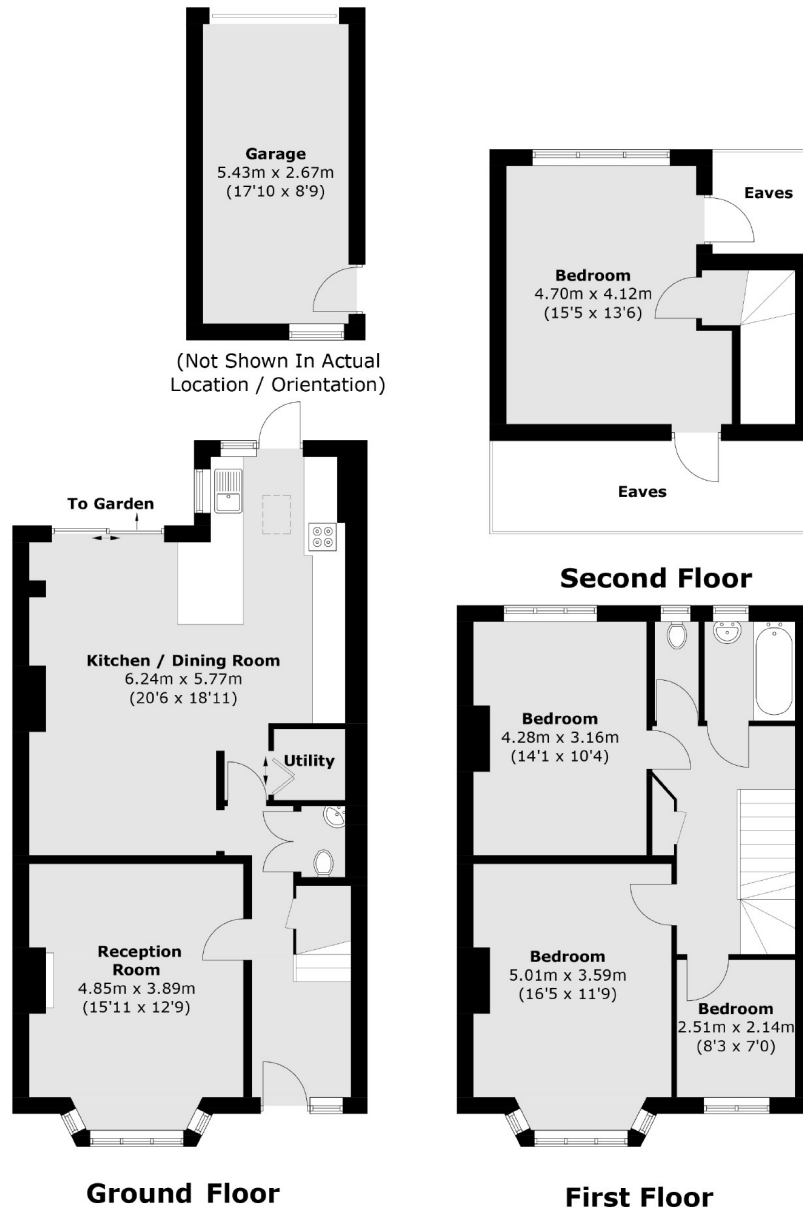


The ground floor of this well presented property comprises a large front reception room, WC & utility area and extended open plan kitchen/dining area with patio doors leading to the sun-trapped decking area. The first floor offers two double bedrooms, single bedroom and family bathroom with separate WC. The loft includes an additional double bedroom with the potential to add an additional bedroom and bathroom (subject to relevant permissions).

Ideally located for Brentford station & Boston Manor (Piccadilly) providing excellent transport links to London. Local parks to enjoy include Elthorne, Blondin & the newly refurbished Boston Manor park. Well regarded schools to choose from locally including the Ofsted outstanding Gunnersbury catholic school.

- Four Bedroom • Large Secluded Garden • Well Presented •
- Excellent Transport Links • Ofsted Outstanding Schools • Local Parks •





Total area (approx.): 137.3 sq. m (1,477.8 sq. ft)
Garage area (approx.): 14.5 sq. m (156 sq. ft)
(Excluding Eaves)

Robertson Smith & Kempson Northfields Sales
116 Northfield Avenue,
London, W13 9RT
020 8566 2340
northfieldssales@robertsonsmithandkempson.co.uk

Energy Rating: C. We aim to make our particulars both accurate and reliable. However they are not guaranteed; nor do they form part of an offer or contract. If you require clarification on any points then please contact us, especially if you're traveling some distance to view. Please note that appliances and heating systems have not been tested and therefore no warranties can be given as to their good working order.