



## Seaford Road, W13

£475,000

This sought-after first floor period flat has a share of freehold. With a modern kitchen, bathroom, separate living room, two bedrooms and potential for a loft conversion (STPP).

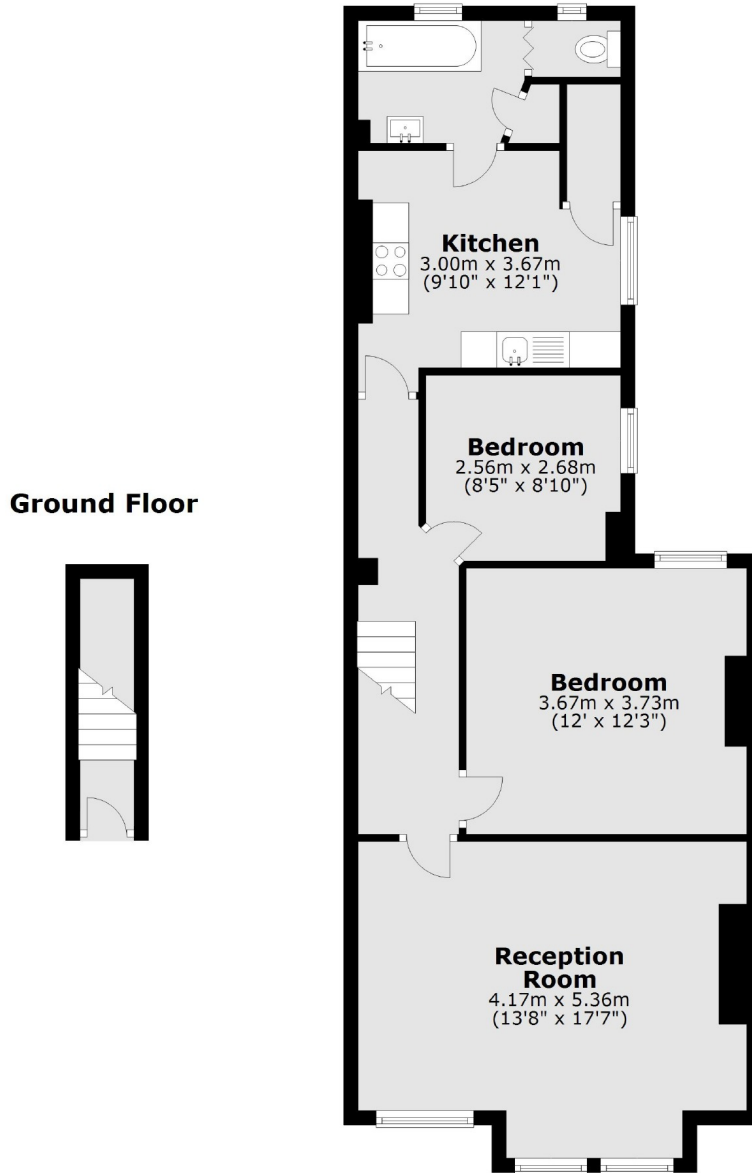


Close to both Oaklands and Fielding Primary School, located in-between Northfields Avenue and Boston Road, this location is ideal for transport and local amenities.

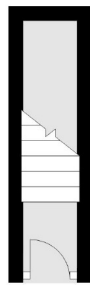
- Period Property • Two Bedrooms • Separate Living Room •
  - Potential For Loft Conversion (STPP) • Close To
  - Transport • First Floor •
-



## First Floor



## Ground Floor



Total area: approx. 71.6 sq. metres (770.2 sq. feet)

Robertson Smith & Kempson Northfields Sales  
116 Northfield Avenue,  
London, W13 9RT  
020 8566 2340  
[northfieldssales@robertsonsmithandkempson.co.uk](mailto:northfieldssales@robertsonsmithandkempson.co.uk)

Energy Rating: . We aim to make our particulars both accurate and reliable. However they are not guaranteed; nor do they form part of an offer or contract. If you require clarification on any points then please contact us, especially if you're traveling some distance to view. Please note that appliances and heating systems have not been tested and therefore no warranties can be given as to their good working order.