



Windmill Road, W5

£450,000

A larger than average well presented two double bedroom share of freehold flat attractively offered onto the market with no onward chain and well maintained communal gardens.

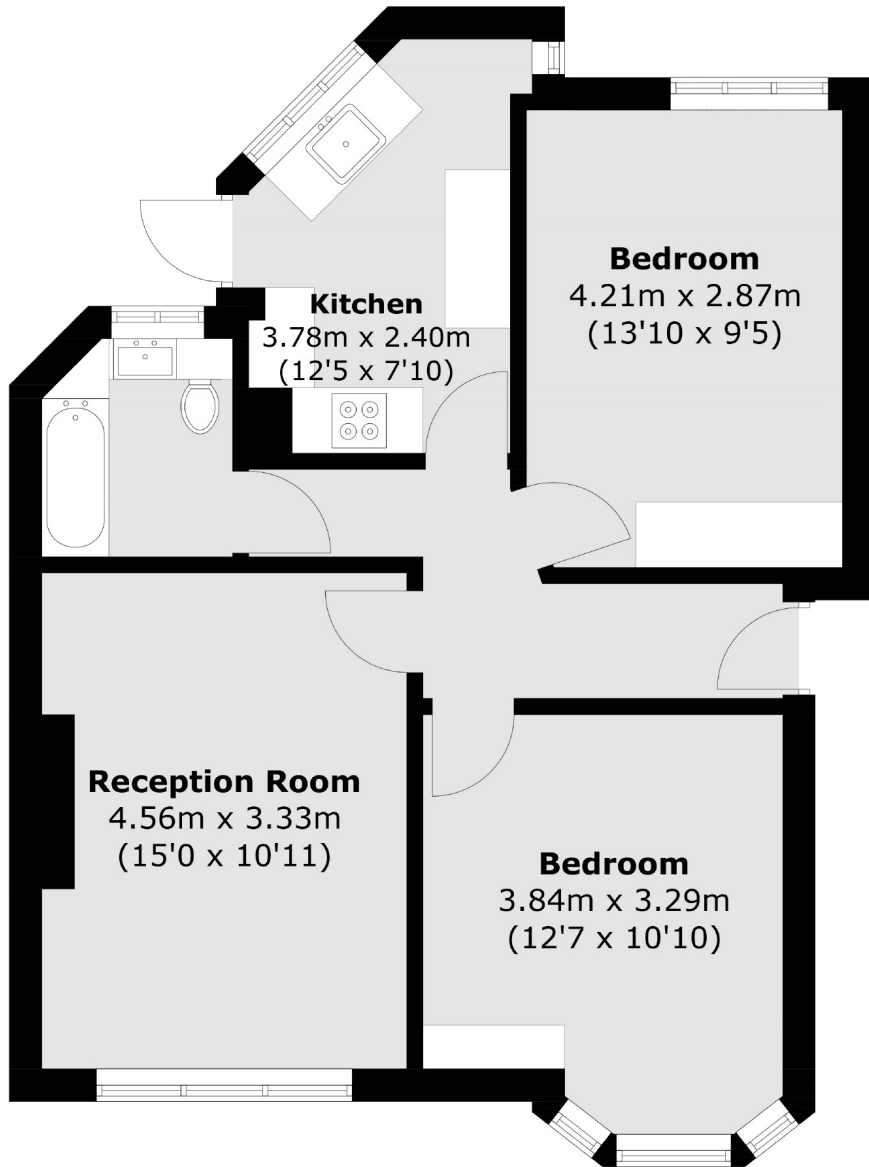


The flat is filled with natural light throughout, the accommodation comprises two double bedrooms, kitchen, family bathroom and spacious reception room.

Ideal location for Boston Manor and Northfields (Piccadilly) stations, Brentford station (Overground) and the E2/E3 bus routes. Local parks to enjoy including Blondin, Lammas and Walpole.

- Two Double Bedrooms • No Onward Chain • Ideal Location •
- Great Transport Links • Local Parks • Communal Gardens •





Total area (approx.): 60.0 sq. m (645.8 sq. ft)

Robertson Smith & Kempson Northfields Sales
116 Northfield Avenue,
London, W13 9RT
020 8566 2340
northfieldssales@robertsonsmithandkempson.co.uk

Energy Rating: D. We aim to make our particulars both accurate and reliable. However they are not guaranteed; nor do they form part of an offer or contract. If you require clarification on any points then please contact us, especially if you're traveling some distance to view. Please note that appliances and heating systems have not been tested and therefore no warranties can be given as to their good working order.