



Mayfield Avenue, W13

£1,100,000

Attractively offered onto the market with no onward chain, this large four bedroom family home filled with natural light throughout and with a sun-trapped secluded garden is a must for early viewing.

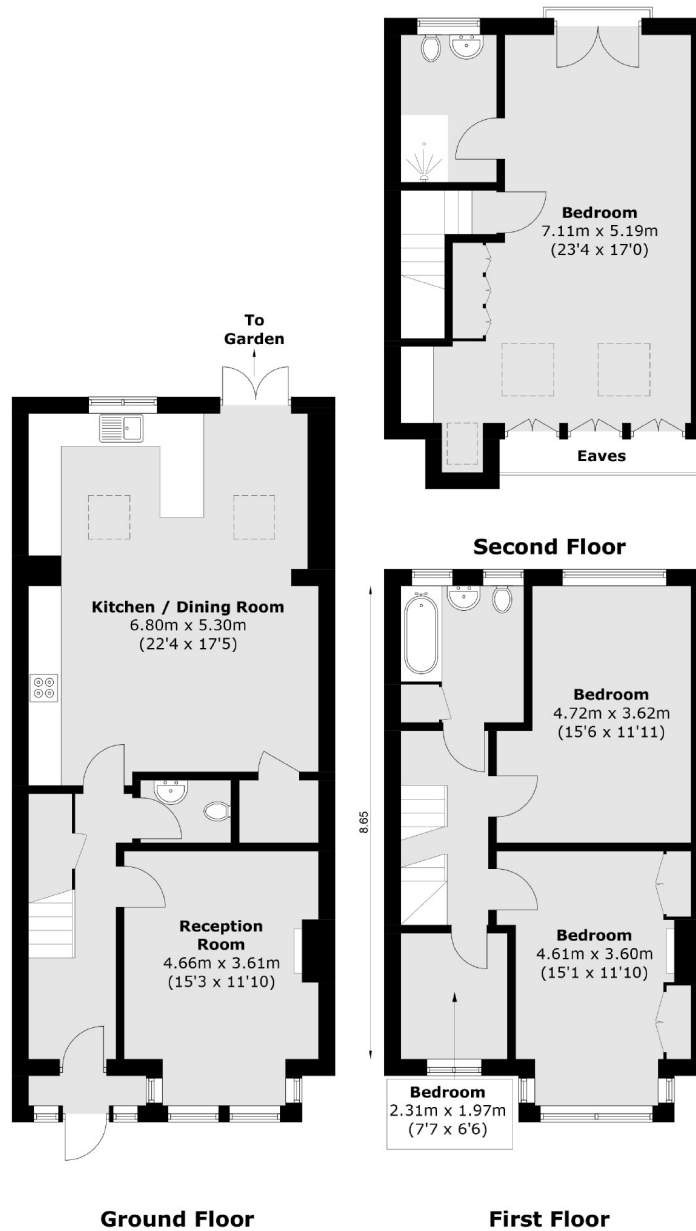


Offering over 1650 sq ft, on the ground floor the accommodation comprises a large front reception room, downstairs toilet, and to the rear the property has been extended to create a wonderful kitchen/ dining area leading to directly to the secluded garden. The first floor offers two double bedrooms, additional single bedroom and family bathroom. The loft has been tastefully converted to include the principle bedroom with en-suite shower-room, a Juliet balcony and an abundance of eaves storage.

Ideally located for a choice of transport links including the Elizabeth Line at West Ealing, Piccadilly at Northfields station and a choice of bus routes on Northfields Avenue/Boston Road. Many local parks to choose from including Lammas, Walpole & Elthorne. Ofsted outstanding schools to choose from including Fielding Primary & Elthorne High.

- No Onward Chain • Four Bedrooms • Secluded Garden •
 - Ofsted Outstanding Schools • Local Parks • Excellent Transport Links •
-





Total area (approx.): 153.5 sq. m (1,652.2 sq. ft)

Robertson Smith & Kempson Northfields Sales
116 Northfield Avenue,
London, W13 9RT
020 8566 2340
northfieldssales@robertsonsmithandkempson.co.uk

Energy Rating: C. We aim to make our particulars both accurate and reliable. However they are not guaranteed; nor do they form part of an offer or contract. If you require clarification on any points then please contact us, especially if you're traveling some distance to view. Please note that appliances and heating systems have not been tested and therefore no warranties can be given as to their good working order.