



**Westfield Road, W13**

**£440,000**

\*Offer in excess of\*

A very spacious, purpose-built, three bedroom first floor maisonette with direct access to a shared garden. Attractively offered onto the market with no onward chain.



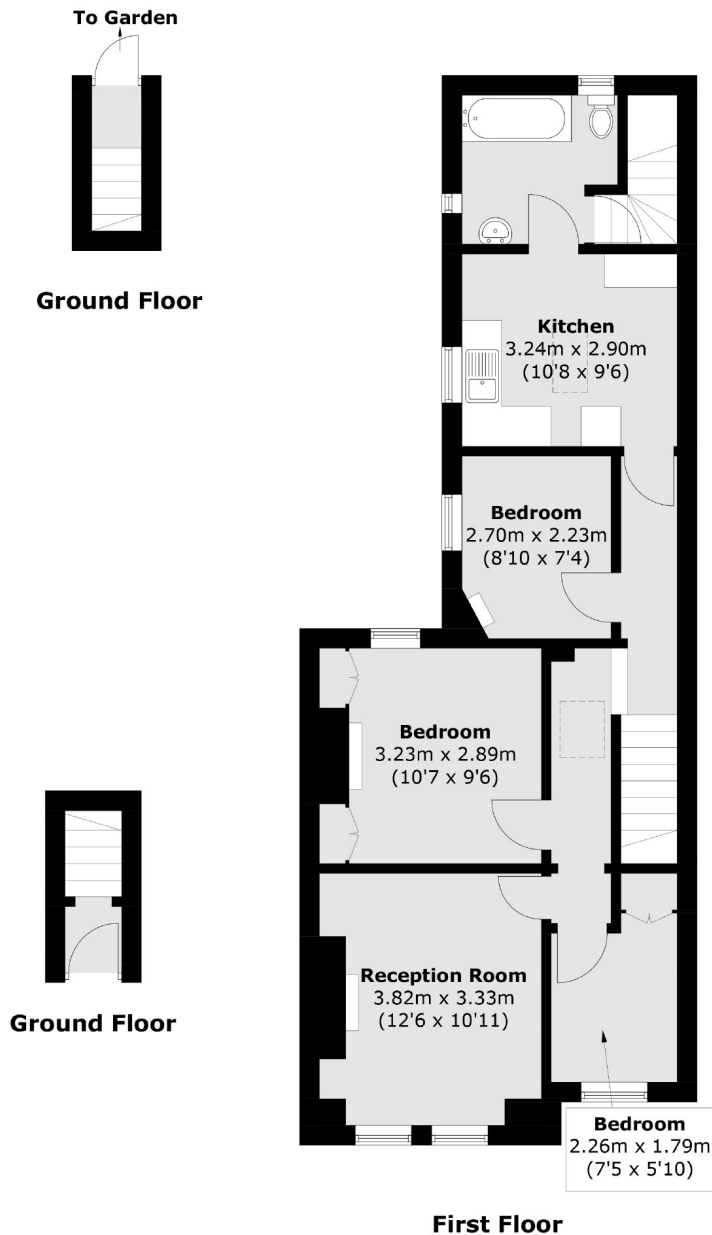
As you come up the stairs, you notice the large landing space and the natural light flowing throughout this flat. The accommodation comprises a light & airy front reception room, three bedrooms, kitchen & family bathroom. Direct access to the garden.

Ideally located for Northfields station (Piccadilly) & Elizabeth Line at West Ealing. Local parks to enjoy including Lammas, Walpole & Elthorne.

- Three Bedrooms • No Onward Chain • Shared Garden •
- Long Lease • Excellent Transport Links • Local Parks •







Total area (approx.): 68.4 sq. m (736.2 sq. ft)

Robertson Smith & Kempson Northfields Sales  
116 Northfield Avenue,  
London, W13 9RT  
020 8566 2340  
northfieldssales@robertsonsmithandkempson.co.uk

Energy Rating: . We aim to make our particulars both accurate and reliable. However they are not guaranteed; nor do they form part of an offer or contract. If you require clarification on any points then please contact us, especially if you're traveling some distance to view. Please note that appliances and heating systems have not been tested and therefore no warranties can be given as to their good working order.