



**Eastbourne Road, TW8**

**£750,000**

\*\*\* Offers In Excess Of \*\*\*

A large four double bedroom semi-detached family home set over three floors with a sun trapped secluded garden.

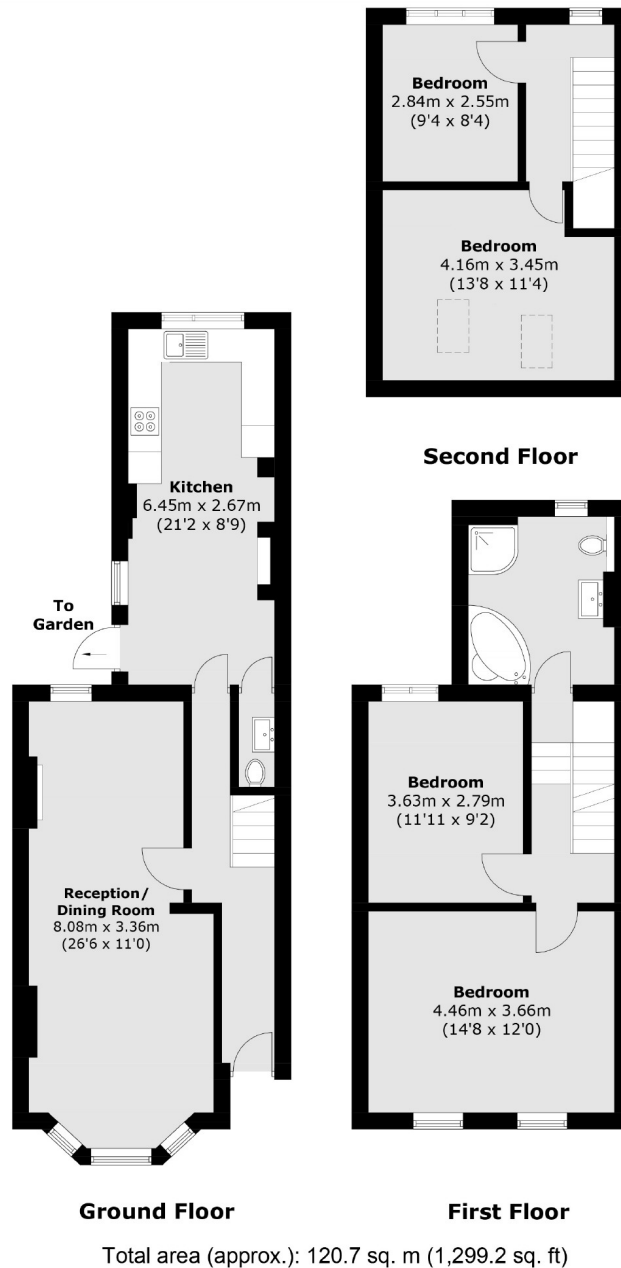


A very well proportioned house throughout, the accommodation on the ground floor comprises a double reception/dining room which leads to the spacious kitchen. High ceilings and natural light throughout. The first floor comprises two double bedrooms and family bathroom. The loft has been tastefully converted to include an additional two double bedrooms. An abundance of storage and character throughout.

Ideally located for many stations including Brentford overground, Northfields & Boston Manor (Piccadilly). Fantastic local parks including Boston Manor park. Well regarded schools including the Ofsted outstanding Gunnersbury catholic school.

- Four Double Bedrooms • Semi-Detached • Secluded Garden •
- Excellent Transport Links • Ofsted Outstanding Schools • Local Park •





Robertson Smith & Kempson Northfields Sales  
116 Northfield Avenue,  
London, W13 9RT  
020 8566 2340  
northfieldssales@robertsonsmithandkempson.co.uk

Energy Rating: D. We aim to make our particulars both accurate and reliable. However they are not guaranteed; nor do they form part of an offer or contract. If you require clarification on any points then please contact us, especially if you're traveling some distance to view. Please note that appliances and heating systems have not been tested and therefore no warranties can be given as to their good working order.