



Boston Manor Road, TW8

£350,000

A two double bedroom split level maisonette presented in excellent condition by the current owners.

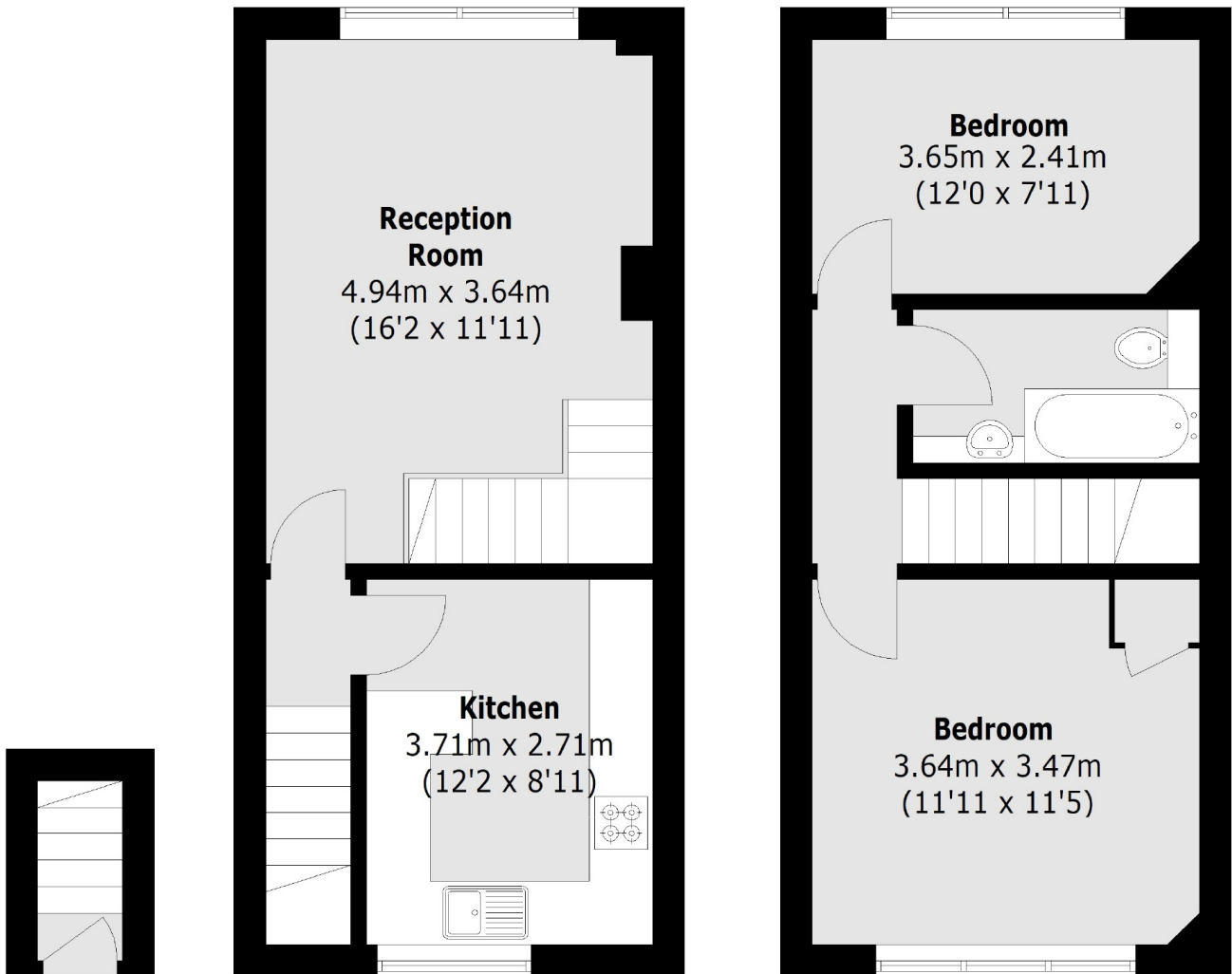


Benefitting from it's own entrance this beautiful flat offers a large reception room and kitchen on the first floor, two double bedrooms and family bathroom on the second floor.

Brentford, Boston Manor & Northfields stations all within walking distance. Well regarded schools including the Ofsted outstanding Gunnersbury catholic schools. Boston Manor park is a fabulous family amenity right on your doorstep.

- Two Double Bedrooms • Excellent Condition • Choice Of Transport Links •
- Well Regarded Schools • Boston Manor Park • Maisonette •





Ground Floor

First Floor

Second Floor

Total area (approx.): 63.8 sq. m (686.6 Sq. ft)

Robertson Smith & Kempson Northfields Sales
116 Northfield Avenue,
London, W13 9RT
020 8566 2340
northfieldssales@robertsonsmithandkempson.co.uk

Energy Rating: C. We aim to make our particulars both accurate and reliable. However they are not guaranteed; nor do they form part of an offer or contract. If you require clarification on any points then please contact us, especially if you're traveling some distance to view. Please note that appliances and heating systems have not been tested and therefore no warranties can be given as to their good working order.