



Royal Gardens, W7

£1,150,000

** Offers In Excess Of **

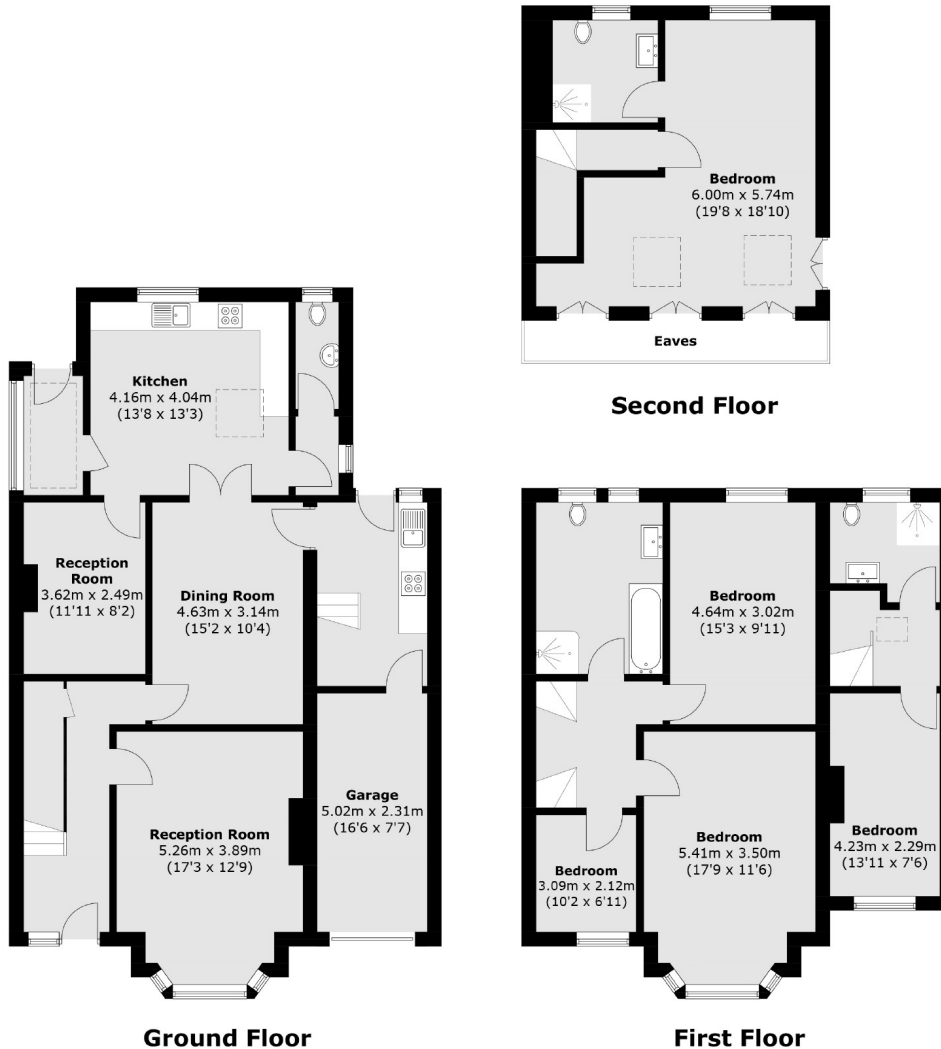
A substantial five bedroom, three bathroom family home spanning over 2,300 sq/ft of living space. Ready to move into with a large west facing garden, garage, off street parking for multiple cars.



Ideally located for excellent transport links including Boston Manor (Piccadilly) and Brentford station, well regarded school catchments including Elthorne High (Ofsted outstanding) and many local parks including Elthorne and Boston Manor Park.

- Five Double Bedrooms • Three Bathrooms • Garage •
 - West Facing Garden • Off Street Parking • Well Regarded Local Schools •
-





Total area (approx.): 216.2 sq. m (2,327.2 sq. ft)
(Excluding Eaves)

Robertson Smith & Kempson Ealing Sales
1 The Broadway, London,
W5 2NT
020 8840 7677
ealingsales@robertsonsmithandkempson.co.uk

Energy Rating: C. We aim to make our particulars both accurate and reliable. However they are not guaranteed; nor do they form part of an offer or contract. If you require clarification on any points then please contact us, especially if you're traveling some distance to view. Please note that appliances and heating systems have not been tested and therefore no warranties can be given as to their good working order.