

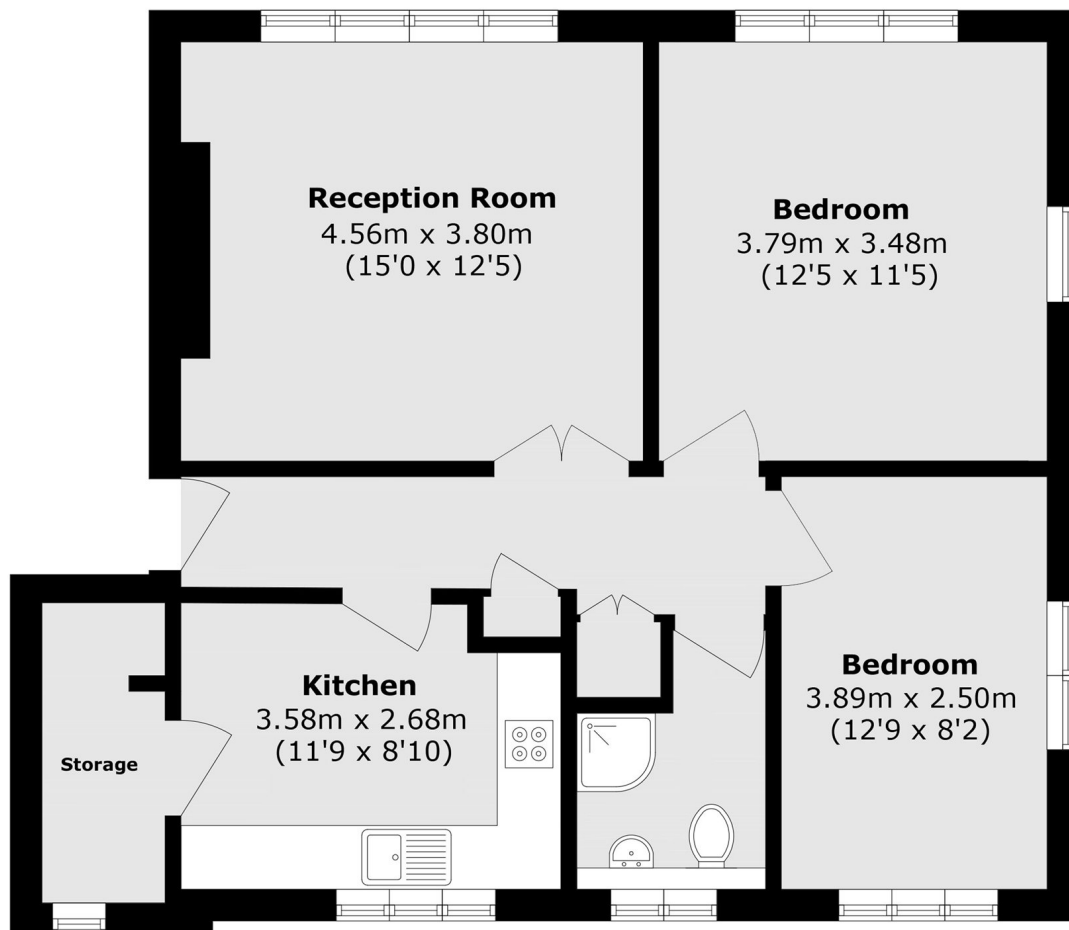


Greystoke Gardens, W5

£461 pw (£2,000 pcm)

A well-maintained two bedroom flat offers a spacious reception room, separate fully fitted kitchen and one bathrooms. The property also features two double bedrooms and access to parking.

Greystoke Gardens is within a few minutes' walk of Hanger Lane tube station (Central line) and well as being close to Ealing Broadway via regular bus routes.



Total area (approx.): 68.9 sq. m (741.6 sq. ft)

Robertson Smith & Kempson Ealing Lettings
1 The Broadway,
London, W5 2NT
020 8840 7885
ealinglettings@robertsonsmithandkempson.co.uk

Energy Rating: C. We aim to make our particulars both accurate and reliable. However they are not guaranteed; nor do they form part of an offer or contract. If you require clarification on any points then please contact us, especially if you're traveling some distance to view. Please note that appliances and heating systems have not been tested and therefore no warranties can be given as to their good working order.