

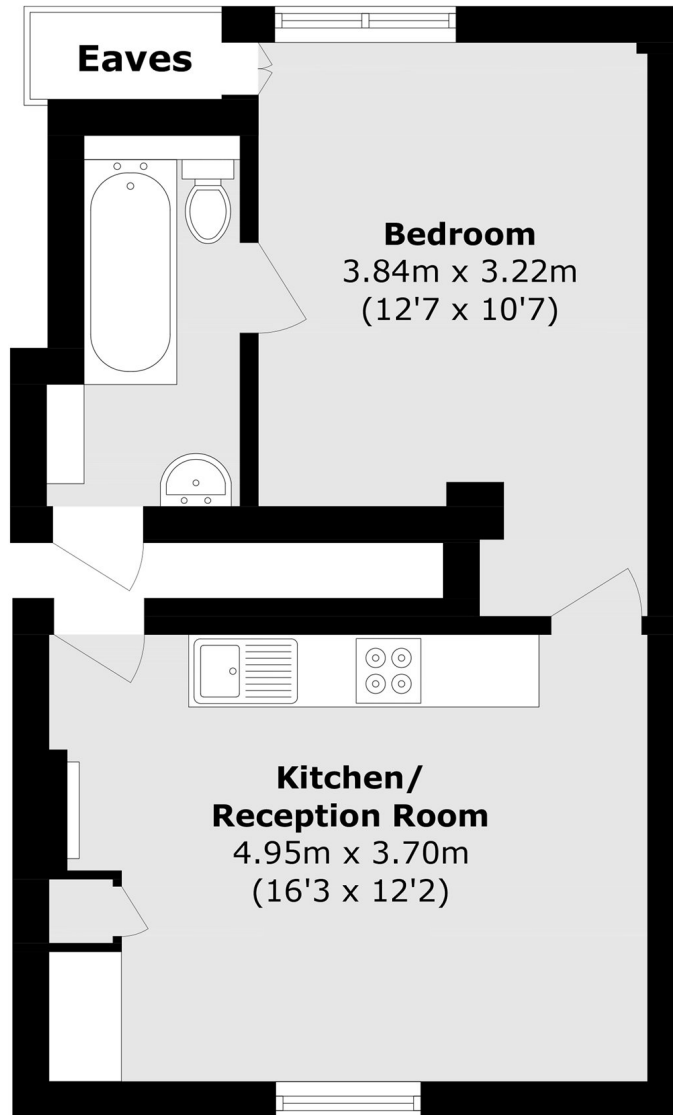


Bond Street, W5

£369 pw (£1,600 pcm)

This charming one bedroom apartment, set within an attractive period building, has open plan living room and kitchen. The space features wall and wooden flooring throughout and double glazed windows.

Bond Street is moments from Walpole Park and Ealing Broadway station (Central, District and Elizabeth lines and overground), shops and amenities.



Total area (approx.): 36.8 sq. m (396.1 sq. ft)
(Excluding Eaves)

Robertson Smith & Kempson Ealing Lettings
1 The Broadway,
London, W5 2NT
020 8840 7885
ealinglettings@robertsonsmithandkempson.co.uk

Energy Rating: D. We aim to make our particulars both accurate and reliable. However they are not guaranteed; nor do they form part of an offer or contract. If you require clarification on any points then please contact us, especially if you're traveling some distance to view. Please note that appliances and heating systems have not been tested and therefore no warranties can be given as to their good working order.