

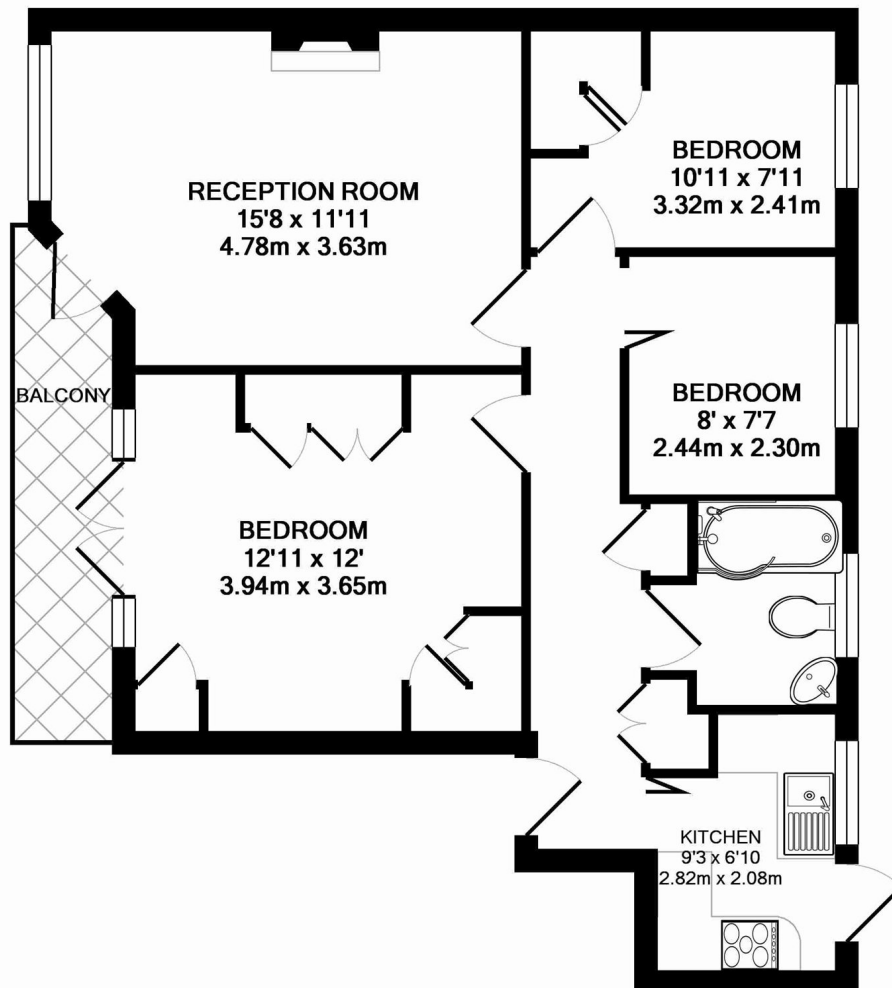


Ealing Village, W5

£519 pw (£2,250 pcm)

An Art Deco apartment set on the second floor with three bedrooms, a separate kitchen, a spacious reception room, a family bathroom and access to well-maintained communal gardens, tennis courts and clubhouse pool.

Ealing Village is a gated development in the heart of Ealing less than half a mile to the Broadway's station, shops and amenities.



EALING VILLAGE, W5
TOTAL APPROX. FLOOR AREA 700 SQ.FT. (65.0 SQ.M.)

All measurements taken to RICS Guidelines for Gross Internal Area. Whilst every attempt has been made to ensure the accuracy of the floor plan contained here, all measurements are approximate and no responsibility is taken for any error, omission or misstatement. This plan is for illustrative purposes only and should be used as such by any prospective purchaser. The services, systems and appliances shown have not been tested and no guarantee as to their operability or efficiency can be given.

Made with Metropix ©2014

Robertson Smith & Kempson Ealing Lettings
1 The Broadway,
London, W5 2NT
020 8840 7885
ealinglettings@robertsonsmithandkempson.co.uk

Energy Rating: C. We aim to make our particulars both accurate and reliable. However they are not guaranteed; nor do they form part of an offer or contract. If you require clarification on any points then please contact us, especially if you're traveling some distance to view. Please note that appliances and heating systems have not been tested and therefore no warranties can be given as to their good working order.