



Ash Grove, W5

£425,000

A spacious three bedroom first floor maisonette attractively offered onto the market with no onward chain. Also includes a secluded garden.

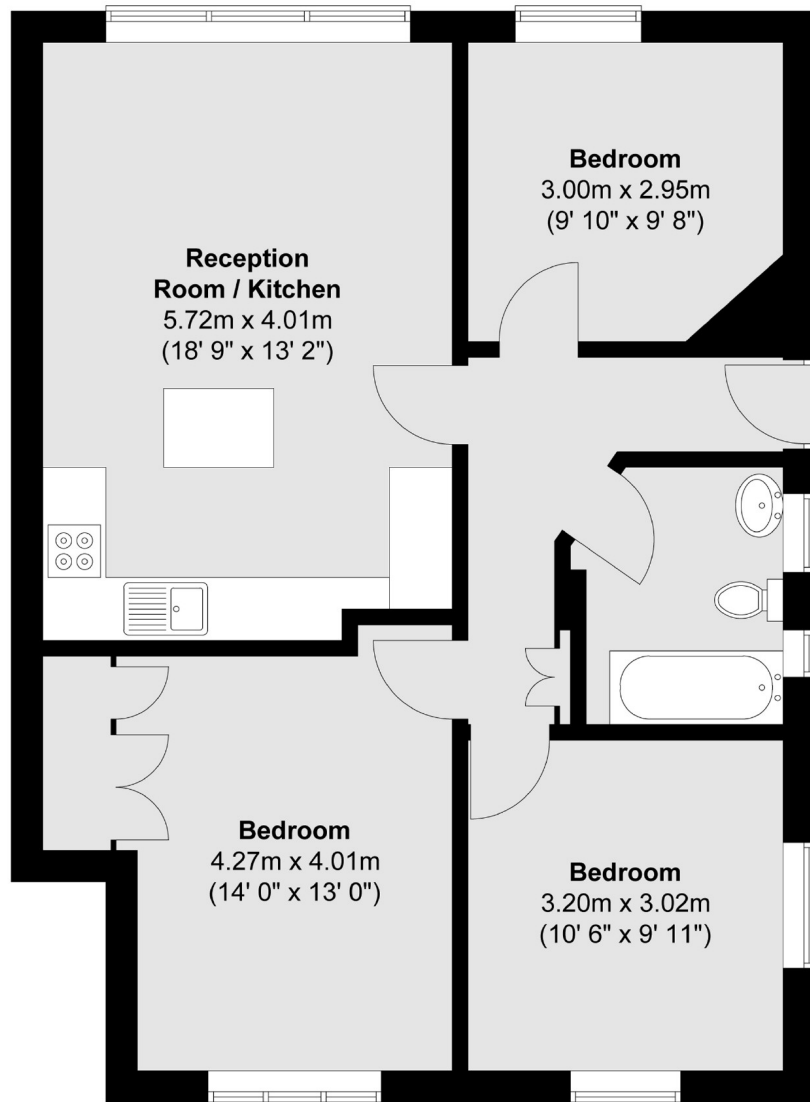


This first floor flat is filled with natural light throughout and comprises three bedrooms, bathroom and generous kitchen/ reception.

South Ealing, Northfields & Ealing common stations all within walking distance providing excellent transport links. Gunnersbury park is a fantastic local amenity. A range of well regarded schools locally.

- Three Bedrooms • No Onward Chain • Private Garden •
 - Excellent Transport Links • Gunnersbury Park • Well Regarded Schools •
-





Total area (approx.) : 69.5 sq. m (748 sq. ft)

Robertson Smith & Kempson Ealing Sales
1 The Broadway, London,
W5 2NT
020 8840 7677
ealingsales@robertsonsmithandkempson.co.uk

Energy Rating: D. We aim to make our particulars both accurate and reliable. However they are not guaranteed; nor do they form part of an offer or contract. If you require clarification on any points then please contact us, especially if you're traveling some distance to view. Please note that appliances and heating systems have not been tested and therefore no warranties can be given as to their good working order.