

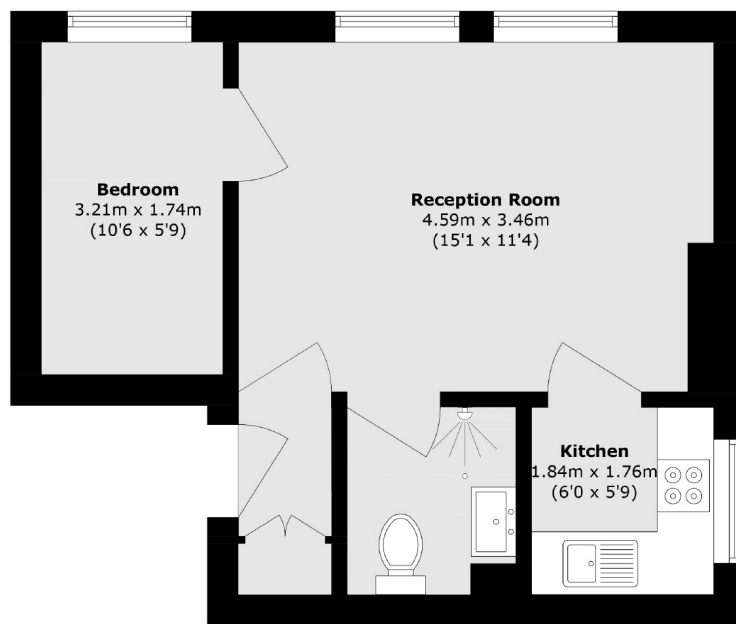


## Grange Park, W5

£334 pw (£1,450 pcm)

This well-presented one bedroom first floor flat features a bright and spacious lounge, modern kitchen, bathroom that comes with a shower and access to communal gardens.

Located close to Ealing Common Park and less than a mile from Ealing Broadway (overground, Central, District and Elizabeth lines) station, shops and amenities.



Total area (approx.): 30.6 sq. m (329.3 sq. ft)

Robertson Smith & Kempson Ealing Lettings  
1 The Broadway, London, W5  
2NT  
020 8840 7885  
[ealinglettings@robertsonsmithandkempson.co.uk](mailto:ealinglettings@robertsonsmithandkempson.co.uk)

Energy Rating: C. We aim to make our particulars both accurate and reliable. However they are not guaranteed; nor do they form part of an offer or contract. If you require clarification on any points then please contact us, especially if you're traveling some distance to view. Please note that appliances and heating systems have not been tested and therefore no warranties can be given as to their good working order.