

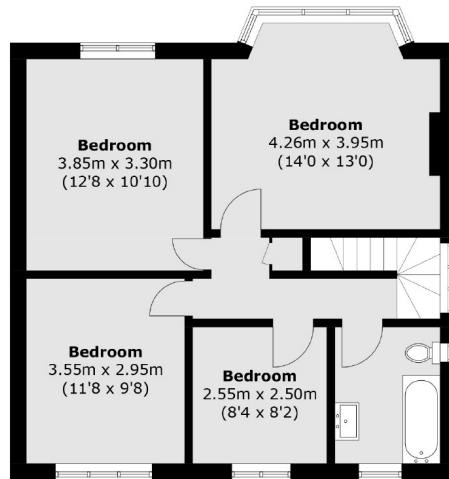


## **Corringway, W5**

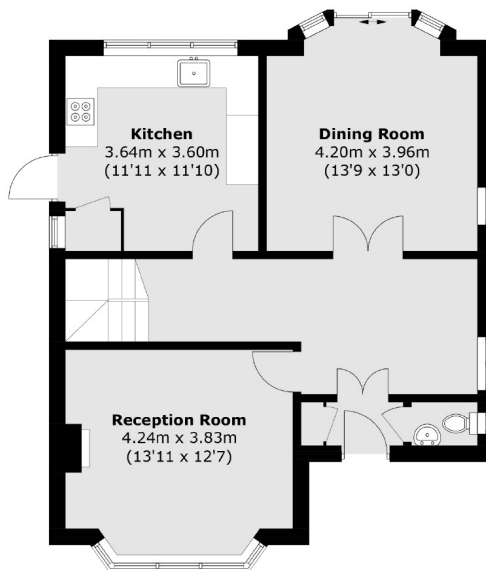
**£923 pw (£4,000 pcm)**

This large detached house in the Haymills area of Ealing, offers just under 1,500 sq ft of living space and has a spacious reception and dining room, off-street parking, large garden and four double bedrooms with one bathroom.

Corringway is in the Haymills area of Ealing, close to various transport links and connection roads, including the A40 and the A406.



**First Floor**



**Ground Floor**

Total area (approx.): 125.5 sq. m (1,350.8 sq. ft)

Robertson Smith & Kempson Ealing Lettings  
1 The Broadway, London, W5  
2NT  
020 8840 7885  
[ealinglettings@robertsonsmithandkempson.co.uk](mailto:ealinglettings@robertsonsmithandkempson.co.uk)

Energy Rating: D. We aim to make our particulars both accurate and reliable. However they are not guaranteed; nor do they form part of an offer or contract. If you require clarification on any points then please contact us, especially if you're traveling some distance to view. Please note that appliances and heating systems have not been tested and therefore no warranties can be given as to their good working order.