

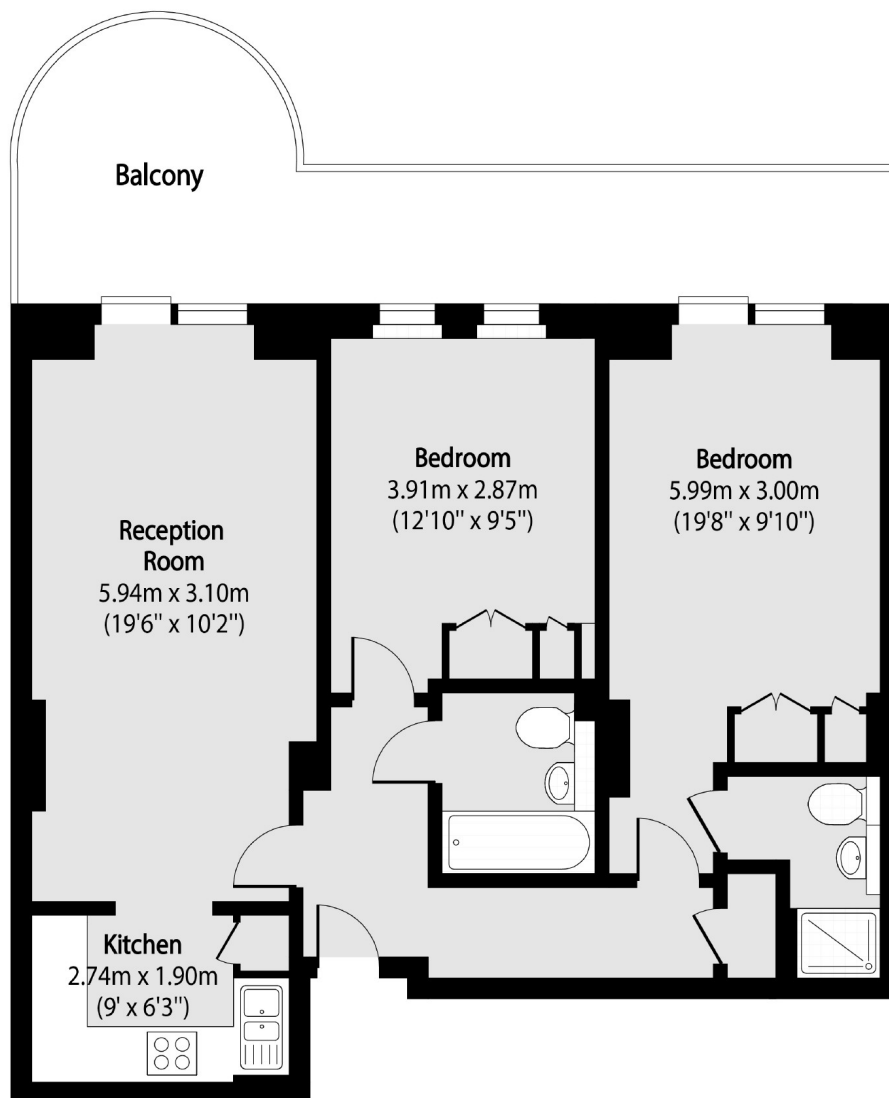


Uxbridge Road, W5

£519 pw (£2,250 pcm)

This two bedroom apartment features an open plan living area that opens onto a private balcony, two bathrooms (one en suite) and built-in storage throughout. The property includes off-street parking, concierge, lift and access to an on-site gym.

Located 0.5 mile from Ealing Broadway (Central, District, Elizabeth lines and overground) station and less than 0.5mile from West Ealing (Elizabeth line) station.



Total area (approx): 68.19 sq m (734 sq. ft)

Balcony total area (approx): 18.02 sq m (194 sq. ft)

Robertson Smith & Kempson Ealing Lettings
1 The Broadway, London, W5
2NT
020 8840 7885
ealinglettings@robertsonsmithandkempson.co.uk

Energy Rating: C. We aim to make our particulars both accurate and reliable. However they are not guaranteed; nor do they form part of an offer or contract. If you require clarification on any points then please contact us, especially if you're traveling some distance to view. Please note that appliances and heating systems have not been tested and therefore no warranties can be given as to their good working order.