

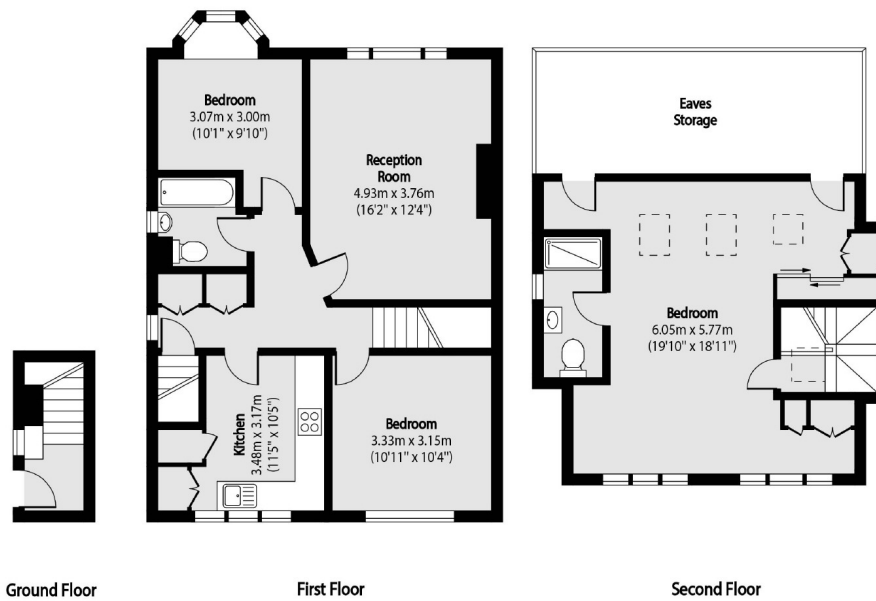


## Webster Gardens, W5

£646 pw (£2,800 pcm)

This well-presented three double bedroom apartment offers generous living space across two levels with a bright and airy layout, the property features a separate fully fitted kitchen, two modern bathrooms and ample built-in storage throughout ideal for professionals or a family.

Webster Gardens is a peaceful residential street just 0.4 miles from Ealing Broadway station and shopping centre is nearby,



Total area (approx): 106.37 sq m (1145 sq. ft)  
(Excluding Eaves Storage)

Robertson Smith & Kempson Ealing Lettings  
1 The Broadway, London, W5  
2NT  
020 8840 7885  
ealinglettings@robertsonsmithandkempson.co.uk

Energy Rating: D. We aim to make our particulars both accurate and reliable. However they are not guaranteed; nor do they form part of an offer or contract. If you require clarification on any points then please contact us, especially if you're traveling some distance to view. Please note that appliances and heating systems have not been tested and therefore no warranties can be given as to their good working order.