



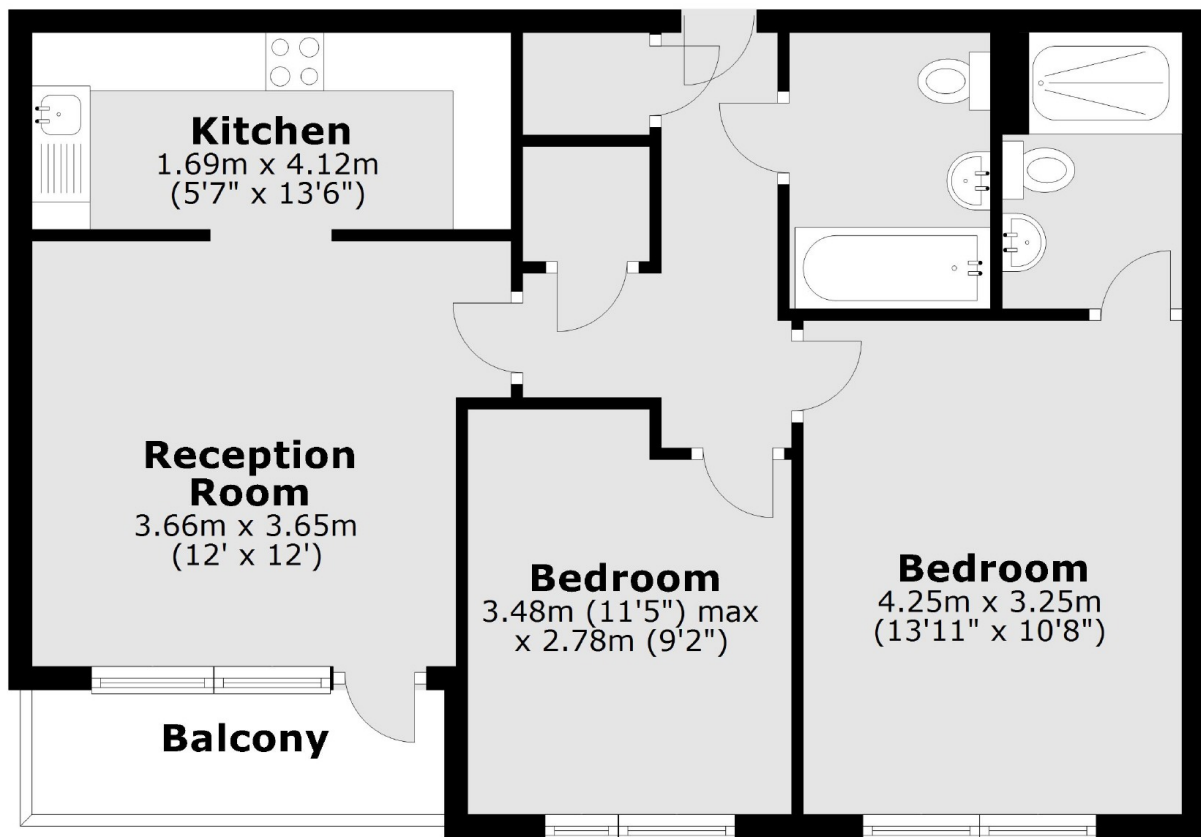
Broadway, W13

£507 pw (£2,200 pcm)

A spacious two bedroom apartment in a popular Ealing development, featuring a semi open plan reception room and modern kitchen, two bathrooms (one en suite), and a private south-facing balcony. The property also benefits from lift access and is ideally located for easy access to local amenities.

Rosemoor House is less than half a mile from West Ealing (Elizabeth) station and close to the shops and transport links.

Ground Floor



Total area: approx. 61.7 sq. metres (664.1 sq. feet)

Robertson Smith & Kempson Ealing Lettings
1 The Broadway, London, W5
2NT
020 8840 7885
ealinglettings@robertsonsmithandkempson.co.uk

Energy Rating: D. We aim to make our particulars both accurate and reliable. However they are not guaranteed; nor do they form part of an offer or contract. If you require clarification on any points then please contact us, especially if you're traveling some distance to view. Please note that appliances and heating systems have not been tested and therefore no warranties can be given as to their good working order.