

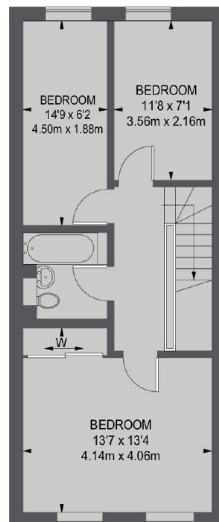


## Hogarth Close, W5

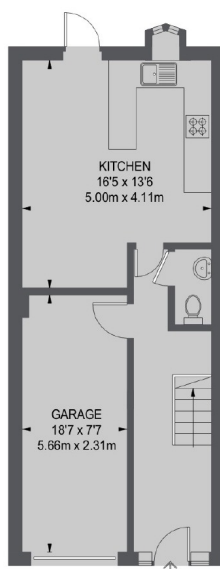
£784 pw (£3,400 pcm)

This spacious four bedroom house in a highly sought-after area of Ealing is offered fully furnished and features a modern kitchen, two bathrooms and a landscaped garden. Additional benefits include a garage and off-street parking.

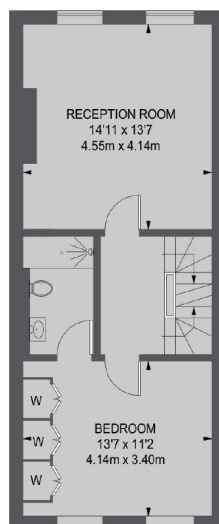
Hogarth Close is perfectly positioned for easy access to the Ealing Broadway and Hanger Lane stations and to the A406 and A40.



**SECOND FLOOR**



**GROUND FLOOR**



**FIRST FLOOR**

TOTAL APPROX. FLOOR AREA  
(INCLUDING GARAGE)  
1467 SQ. FT. (136.3 SQ. M.)

Robertson Smith & Kempson Ealing Lettings  
1 The Broadway, London, W5  
2NT  
020 8840 7885  
[ealinglettings@robertsonsmithandkempson.co.uk](mailto:ealinglettings@robertsonsmithandkempson.co.uk)

Energy Rating: C. We aim to make our particulars both accurate and reliable. However they are not guaranteed; nor do they form part of an offer or contract. If you require clarification on any points then please contact us, especially if you're traveling some distance to view. Please note that appliances and heating systems have not been tested and therefore no warranties can be given as to their good working order.