

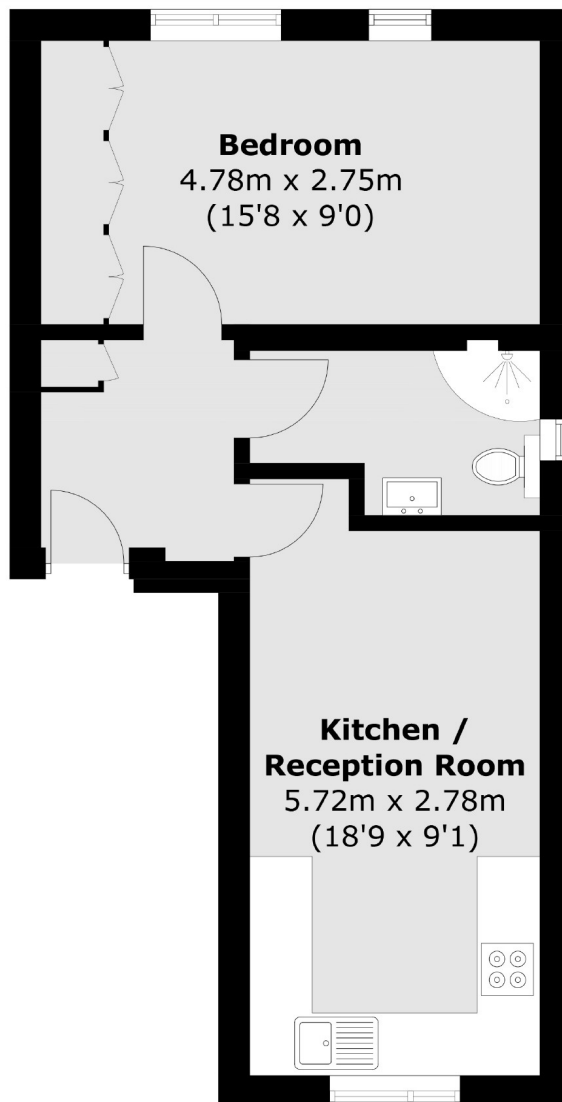


Costons Lane, UB6

£369 pw (£1,600 pcm)

This newly constructed one bedroom first floor apartment offers a blend of modern living and style. Featuring an open plan, fully-equipped kitchen and reception room. The property also includes double bedroom with built-in wardrobes, a contemporary bathroom and access to loft storage.

Costons Lane is ideally located close to Greenford Broadway and is well connected to Central London by various transport links.



Total area (approx.): 37.5 sq. m (403.6 sq. ft)

Robertson Smith & Kempson Ealing Lettings
1 The Broadway, London, W5
2NT
020 8840 7885
ealinglettings@robertsonsmithandkempson.co.uk

Energy Rating: D. We aim to make our particulars both accurate and reliable. However they are not guaranteed; nor do they form part of an offer or contract. If you require clarification on any points then please contact us, especially if you're traveling some distance to view. Please note that appliances and heating systems have not been tested and therefore no warranties can be given as to their good working order.