



Blossom Close, W5

£675,000

Offering over 1250 sq ft, a four double bedroom family home with a secluded garden and off-street parking. Attractively offered onto the market with no onward chain.

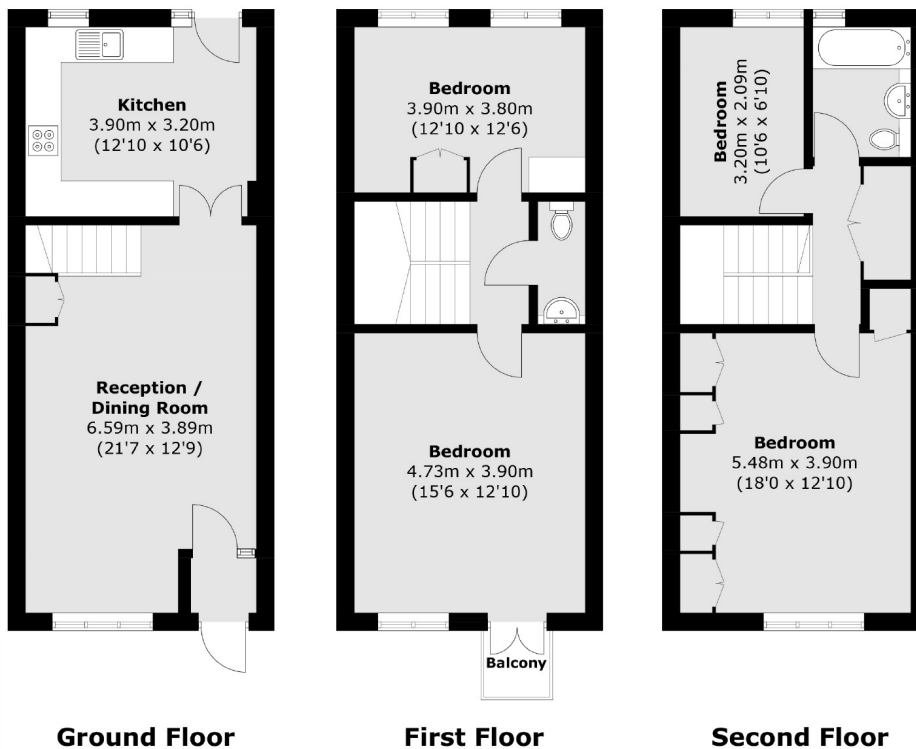


The ground floor offers a large double reception and kitchen which leads to the sun trapped garden. The first floor comprises two double bedrooms (the principal bedroom offering a balcony also) and a toilet. The third floor accommodation includes a large double bedroom with huge storage, an additional bedroom and family bathroom.

Acton Town, South Ealing, Ealing Common (all Piccadilly) & Ealing Broadway (Elizabeth Line) all within a short distance. Gunnersbury Park on your doorstep is a wonderful family amenity.

- Four Double Bedrooms • No Onward Chain • Priced To Sell •
 - Secluded Garden • Gunnersbury Park • Excellent Transport Links •
-





Total area (approx.): 116.3 sq. m (1,251.8 sq. ft)
Balcony: 1.2 sq. m (13.0 sq. ft)

Robertson Smith & Kempson Ealing Sales
1 The Broadway, London,
W5 2NT
020 8840 7677
ealingsales@robertsonsmithandkempson.co.uk

Energy Rating: C. We aim to make our particulars both accurate and reliable. However they are not guaranteed; nor do they form part of an offer or contract. If you require clarification on any points then please contact us, especially if you're traveling some distance to view. Please note that appliances and heating systems have not been tested and therefore no warranties can be given as to their good working order.