

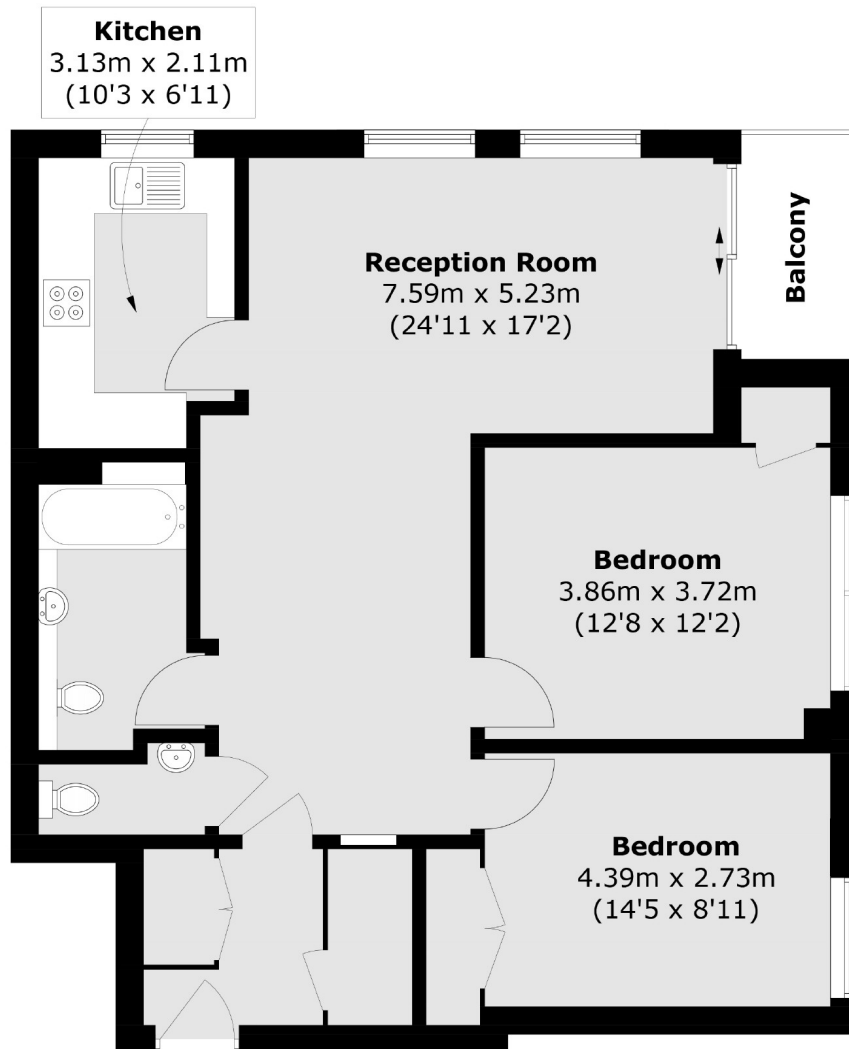


Green Vale, W5

£542 pw (£2,350 pcm)

This very spacious two bedroom tenth floor apartment has an open plan reception room, modern kitchen and additional WC. The property also has gas central heating and off-street parking.

Gilbert Court is less than half a mile from North Ealing (Piccadilly line) station and a short distance from the various shops and amenities of Ealing Broadway.



Total area (approx.): 73.8 sq. m (794.3 sq. ft)
Balcony area (approx.): 2.9 sq. m (31.2 sq. ft)

Robertson Smith & Kempson Ealing Lettings
1 The Broadway, London, W5
2NT
020 8840 7885
ealinglettings@robertsonsmithandkempson.co.uk

Energy Rating: D. We aim to make our particulars both accurate and reliable. However they are not guaranteed; nor do they form part of an offer or contract. If you require clarification on any points then please contact us, especially if you're traveling some distance to view. Please note that appliances and heating systems have not been tested and therefore no warranties can be given as to their good working order.