



Longfield Avenue, W5

£640,000

A wonderful one double bedroom flat presented in excellent condition throughout benefitting from a long lease and an allocated parking space. Other benefits include a concierge, spa / gym and pool.

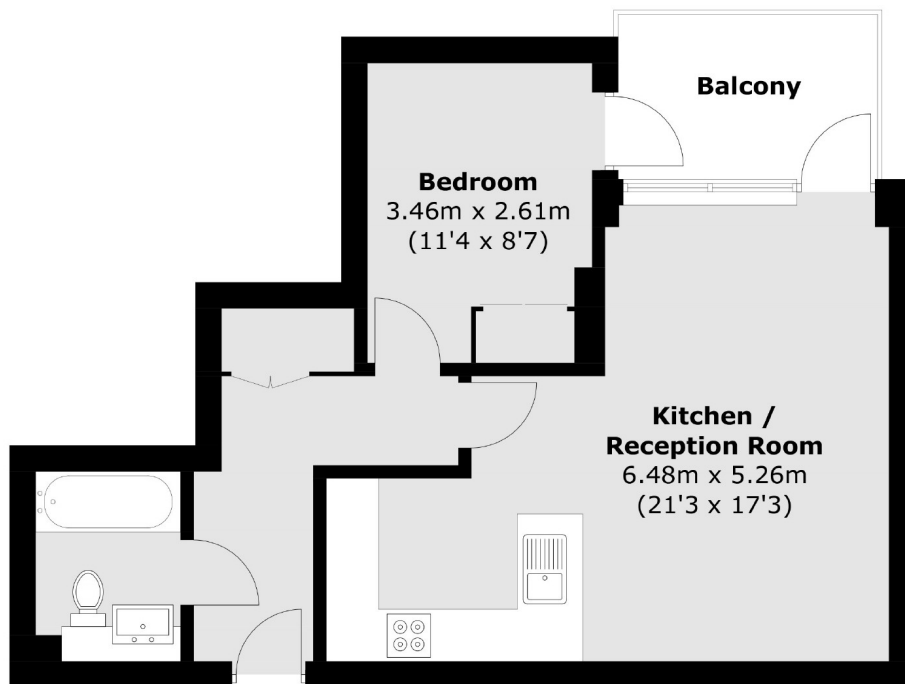


Spacious, light & airy flat comprising a bathroom, large kitchen/diner and a double bedroom (both the bedroom and kitchen/diner have access to the sun trapped balcony). A wonderful concierge service as well as a spa / gym and pool.

Ideally located for easy access to central London on the Elizabeth line at Ealing Broadway. Many different bus routes to Acton, Hanwell, Ealing Common & Chiswick.

- Long Lease • Allocated Parking • Concierge •
 - Excellent Condition • Balcony • Elizabeth Line (Ealing) •
-





Total area (approx.): 47.7 sq. m (513.4 sq. ft)
Balcony area (approx.): 5.7 sq. m (61.3 sq. ft)

Robertson Smith & Kempson Ealing Sales
1 The Broadway, London,
W5 2NT
020 8840 7677
ealingsales@robertsonsmithandkempson.co.uk

Energy Rating: B. We aim to make our particulars both accurate and reliable. However they are not guaranteed; nor do they form part of an offer or contract. If you require clarification on any points then please contact us, especially if you're traveling some distance to view. Please note that appliances and heating systems have not been tested and therefore no warranties can be given as to their good working order.