



Arlington Road, W13

£399,950

O.I.E.O

A large two double bedroom semi-detached ground floor flat with a shared garden which is attractively offered onto the market with no onward chain and share of freehold.

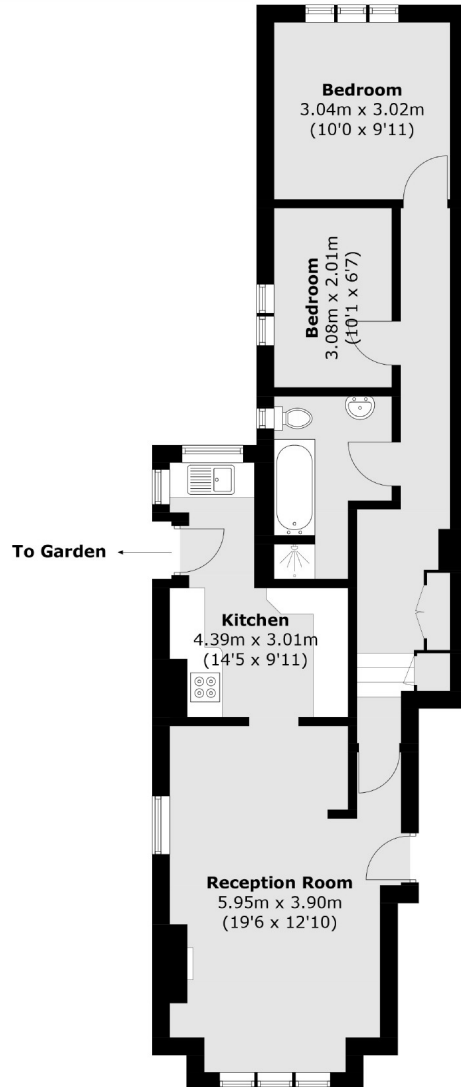


Offering over 700 sq ft, this spacious ground floor flat comprises a large front reception room, kitchen, family bathroom and two double bedrooms to the rear.

Ideally located for excellent transport links including Elizabeth Line at West Ealing - which provides unrivalled access to central London. Local parks include Drayton Green & Pitshanger Park which provide great family amenities.

- Two Double Bedrooms • Share Of Freehold • Shared Garden •
- No Onward Chain • Elizabeth Line • Pitshanger Park •





Total area (approx.): 65.6 sq. m (706.1 sq. ft)

Robertson Smith & Kempson Ealing Sales
1 The Broadway, London,
W5 2NT
020 8840 7677
ealingsales@robertsonsmithandkempson.co.uk

Energy Rating: E. We aim to make our particulars both accurate and reliable. However they are not guaranteed; nor do they form part of an offer or contract. If you require clarification on any points then please contact us, especially if you're traveling some distance to view. Please note that appliances and heating systems have not been tested and therefore no warranties can be given as to their good working order.