



## Mount Park Road, W5

£525,000

No onward chain. A well-presented ground-floor, split-level flat with lovely views over the gardens. The property features an open-plan kitchen/lounge with space for a dining area, two double bedrooms, and two bathrooms. It also benefits from gas central heating, direct access to a communal garden, and an off-street parking space.



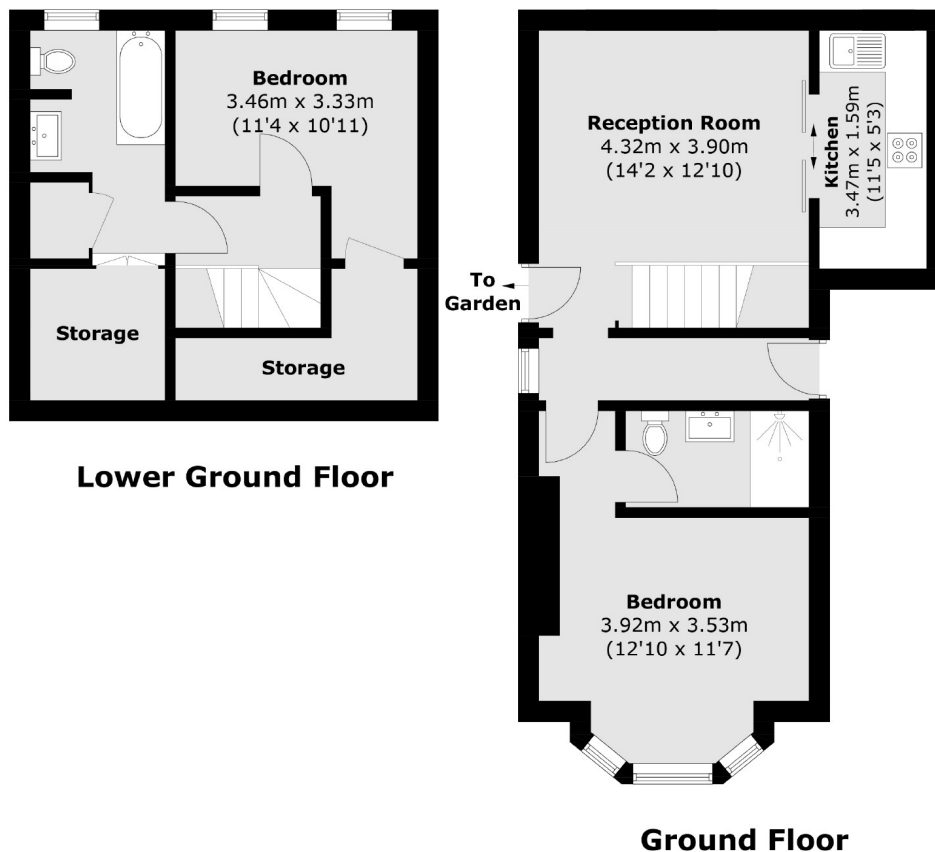
A well-presented ground-floor, split-level flat with lovely views over the gardens. The property features an open-plan kitchen/lounge with space for a dining area, two double bedrooms, and two bathrooms. It also benefits from gas central heating, direct access to a communal garden, and an off-street parking space.

Mount Park Road is less than half a mile from Ealing Broadway station, which serves the Central, District, and Elizabeth lines, as well as the overground.

- Two Bedrooms • Two Bathroom • Off-Street Parking •
- Communal Garden • Ealing Broadway • Chain Free •







Total area (approx.): 75.8 sq. m (815.9 sq. ft)

Robertson Smith & Kempson Ealing Sales  
1 The Broadway, London,  
W5 2NT  
020 8840 7677  
[ealingsales@robertsonsmithandkempson.co.uk](mailto:ealingsales@robertsonsmithandkempson.co.uk)

Energy Rating: D. We aim to make our particulars both accurate and reliable. However they are not guaranteed; nor do they form part of an offer or contract. If you require clarification on any points then please contact us, especially if you're traveling some distance to view. Please note that appliances and heating systems have not been tested and therefore no warranties can be given as to their good working order.