



**Girdlers Road, W14**

**£500,000**

\*\*\* Guide Price \*\*\*

What a fantastic opportunity to acquire a large two bedroom garden flat in a fantastic location with huge potential for the new buyer to refurbish it to their standards.

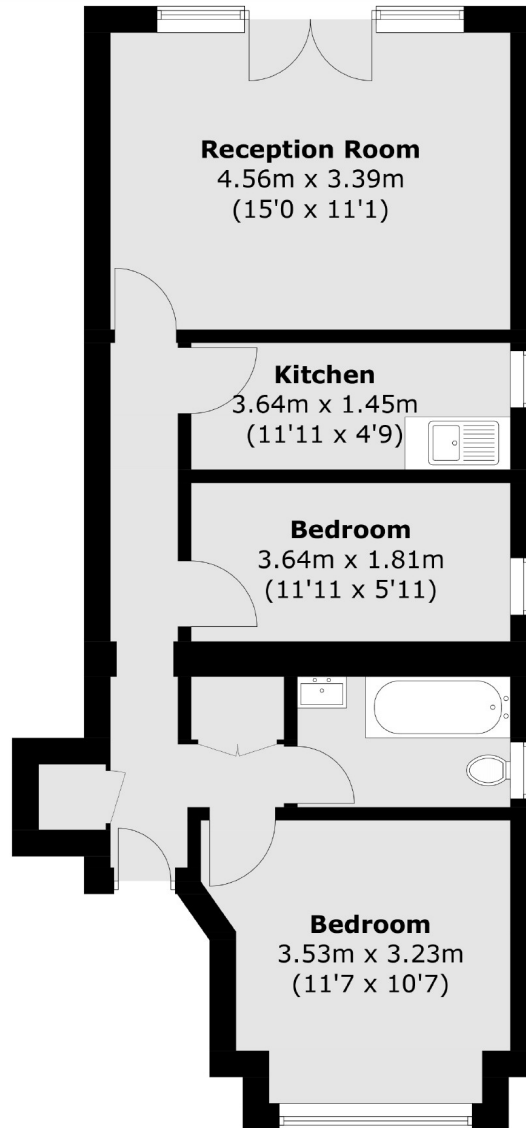


The accommodation has the potential to be re-configured but currently laid out comprising two bedrooms, family bathroom, kitchen and a large reception room which leads directly to the secluded garden.

Kensington Olympia, Barons Court & Hammersmith stations all within easy walking distance. Well regarded schools including the Ofsted outstanding Larmenier & Sacred Heart catholic school.

- Two Bedrooms • No Onward Chain • Long Lease •
- Excellent Transport Links • Secluded Garden • Ofsted Outstanding Schools •





## Lower Ground Floor

Total area (approx.): 52.6 sq. m (566.2 sq. ft)

Robertson Smith & Kempson Ealing Sales

1 The Broadway, London,  
W5 2NT

020 8840 7677

[ealingsales@robertsonsmithandkempson.co.uk](mailto:ealingsales@robertsonsmithandkempson.co.uk)

Energy Rating: . We aim to make our particulars both accurate and reliable. However they are not guaranteed; nor do they form part of an offer or contract. If you require clarification on any points then please contact us, especially if you're traveling some distance to view. Please note that appliances and heating systems have not been tested and therefore no warranties can be given as to their good working order.