



## Grafton Close, W13

£425,000

\*\*\* Offers In Excess Of \*\*\*

A three bedroom first floor flat with the opportunity to put your own stamp on it offering a long lease, garden and no onward chain.

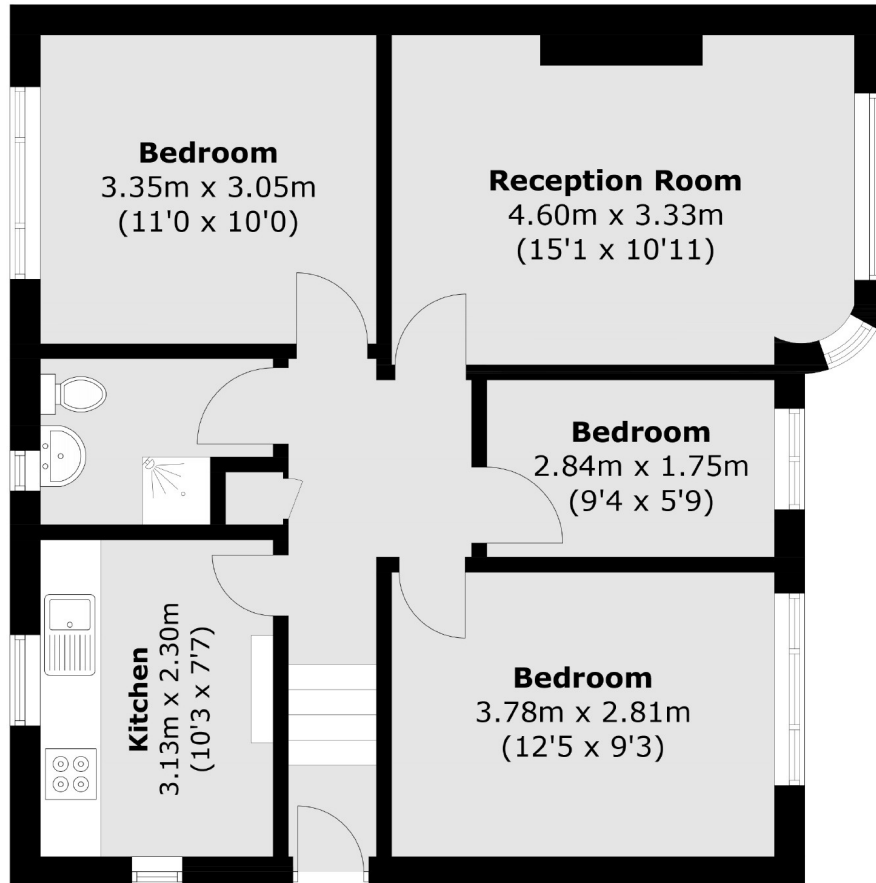


Offering over 650 sq ft, this first floor flat is perfect for a first time buyer or investor alike. The accommodation comprises three bedrooms, kitchen, bathroom and reception. Benefitting from natural light throughout with the aid of the nice high ceilings.

Ideally located for unrivalled access to Central London via the Elizabeth line at West Ealing station which is a mere five minute walk from the property. Lots of local parks to enjoy including Drayton Green, The Bunny Park & Pitshanger.

- Three Bedrooms • First Floor • Garden •
- No Onward Chain • Elizabeth Line (West Ealing) • Maisonette •





Total area (approx.): 61.3 sq. m (659.8 sq. ft)

Robertson Smith & Kempson Ealing Sales  
1 The Broadway, London,  
W5 2NT  
020 8840 7677  
[ealingsales@robertsonsmithandkempson.co.uk](mailto:ealingsales@robertsonsmithandkempson.co.uk)

Energy Rating: D. We aim to make our particulars both accurate and reliable. However they are not guaranteed; nor do they form part of an offer or contract. If you require clarification on any points then please contact us, especially if you're traveling some distance to view. Please note that appliances and heating systems have not been tested and therefore no warranties can be given as to their good working order.