

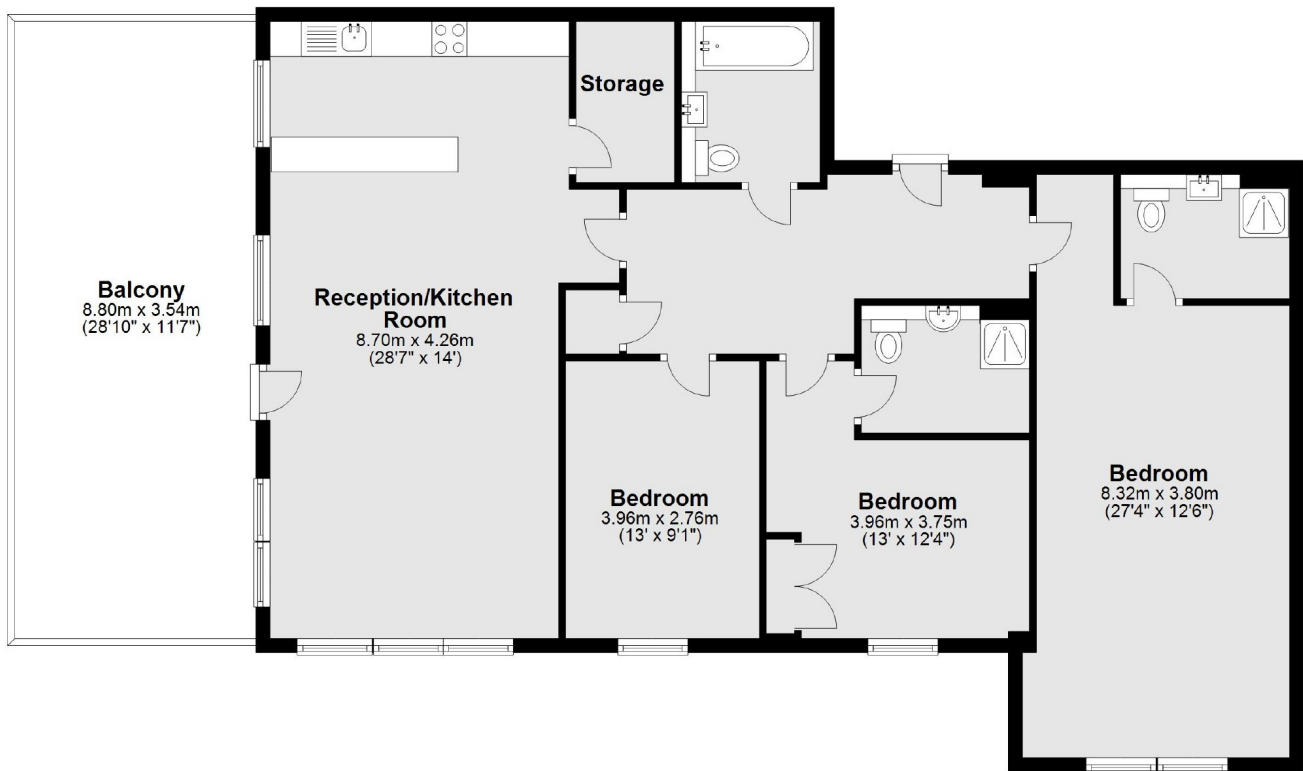


Filmworks Walk, W5

£1,107 pw (£4,800 pcm)

This three bedroom apartment is in a newly build development with concierge and lift access. The property has large entrance hallway, a spacious main bedroom with a dressing area and an en suite bathroom. The second bedroom also benefits from its own en suite. A family bathroom serves the third bedroom.

Filmworks Walk is close to Ealing Broadway (Central, District, Elizabeth and overground) station.



Main area: Approx. 119.7 sq. metres (1288.6 sq. feet)
Plus balconies, approx. 31.2 sq. metres (335.3 sq. feet)

Robertson Smith & Kempson Ealing Lettings
1 The Broadway, London, W5
2NT
020 8840 7885
ealinglettings@robertsonsmithandkempson.co.uk

Energy Rating: B. We aim to make our particulars both accurate and reliable. However they are not guaranteed; nor do they form part of an offer or contract. If you require clarification on any points then please contact us, especially if you're traveling some distance to view. Please note that appliances and heating systems have not been tested and therefore no warranties can be given as to their good working order.