



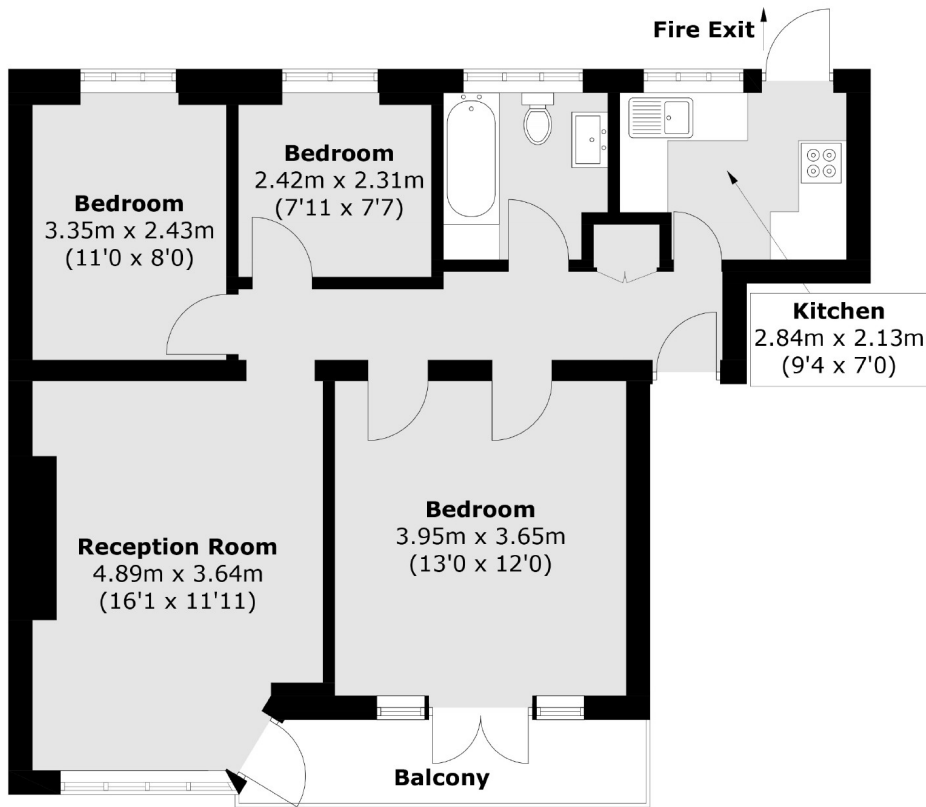
Ealing Village, W5

£475,000

A three bedroom top floor flat attractively offered onto the market with no onward chain and long lease.

Ealing Broadway station within walking distance providing excellent transport links to Central London on the Elizabeth Line. North Ealing & Ealing Common stations within walking distance. Well regarded schools locally to choose from.

- Long Lease • Gated Community • Three Bedrooms •
- No Onward Chain • Top Floor • Elizabeth Line •



Third Floor

Total area (approx.): 66.7 sq. m (717.9 sq. ft)

Robertson Smith & Kempson Northfields Sales
116 Northfield Avenue,
London, W13 9RT
020 8566 2340
northfieldssales@robertsonsmithandkempson.co.uk

Energy Rating: D. We aim to make our particulars both accurate and reliable. However they are not guaranteed; nor do they form part of an offer or contract. If you require clarification on any points then please contact us, especially if you're traveling some distance to view. Please note that appliances and heating systems have not been tested and therefore no warranties can be given as to their good working order.