



## Holyoake Walk, W5

£425,000

Located in this much sought after enclave, this stunning two bedroom flat is attractively offered with a long lease.



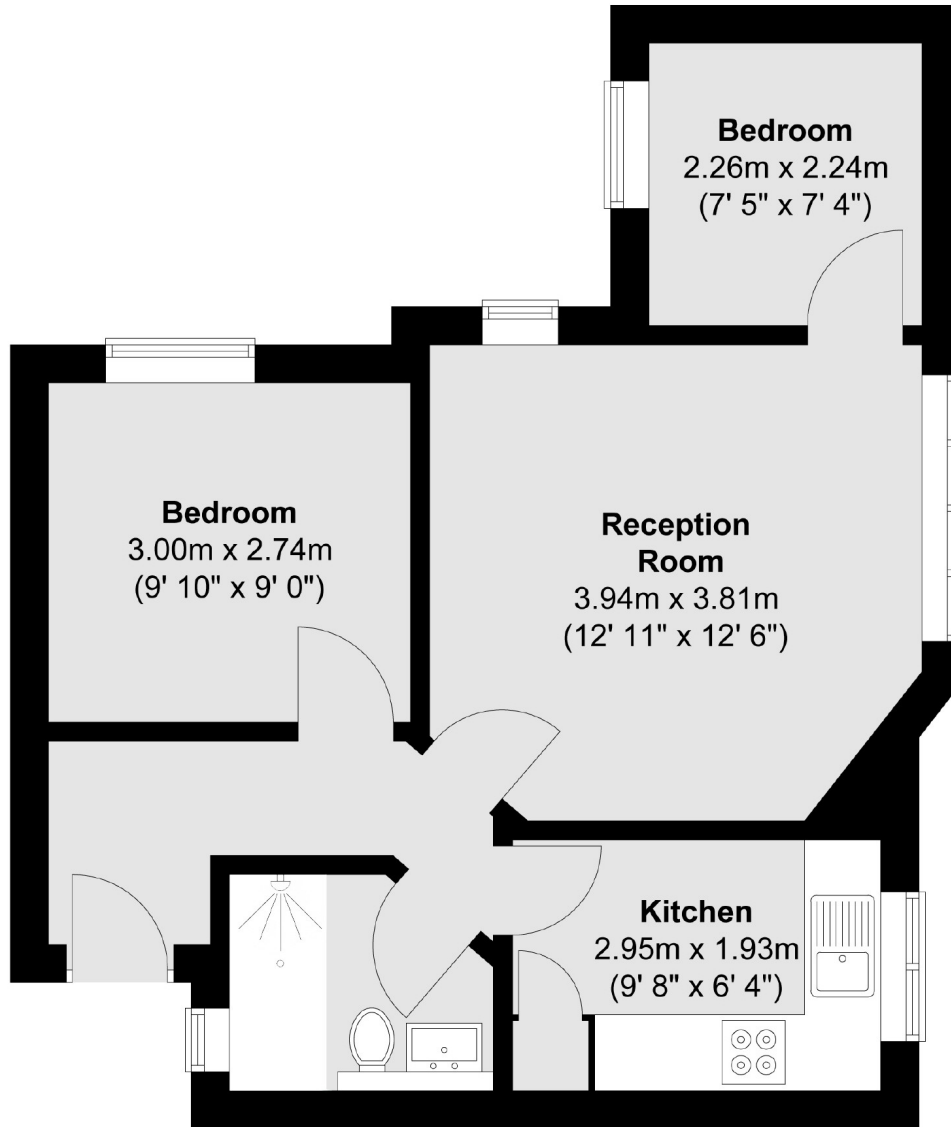


Recently refurbished by the current owners, this well presented flat comprises two bedroom, reception, kitchen and bathroom.

Hanger Lane, Perivale & Ealing Broadway (Elizabeth Line) all within 0.9 miles of the property providing excellent transport links. Pitshanger park provides a fantastic amenity on your doorstep to enjoy.

- Two Bedrooms • Long Lease • Stunning Condition •
- Excellent Transport Links • Pitshanger Park • Ideal Location •





Total area (approx.) : 43.4 sq. m (467 sq. ft)

Robertson Smith & Kempson Northfields Sales  
116 Northfield Avenue,  
London, W13 9RT  
020 8566 2340  
[northfieldssales@robertsonsmithandkempson.co.uk](mailto:northfieldssales@robertsonsmithandkempson.co.uk)

Energy Rating: . We aim to make our particulars both accurate and reliable. However they are not guaranteed; nor do they form part of an offer or contract. If you require clarification on any points then please contact us, especially if you're traveling some distance to view. Please note that appliances and heating systems have not been tested and therefore no warranties can be given as to their good working order.