



## Cleveley Crescent, W5

£525,000

\* Offers Over \*

A three bedroom family home with secluded garden attractively offered onto the market with no onward chain. Potential to extend (STPP).



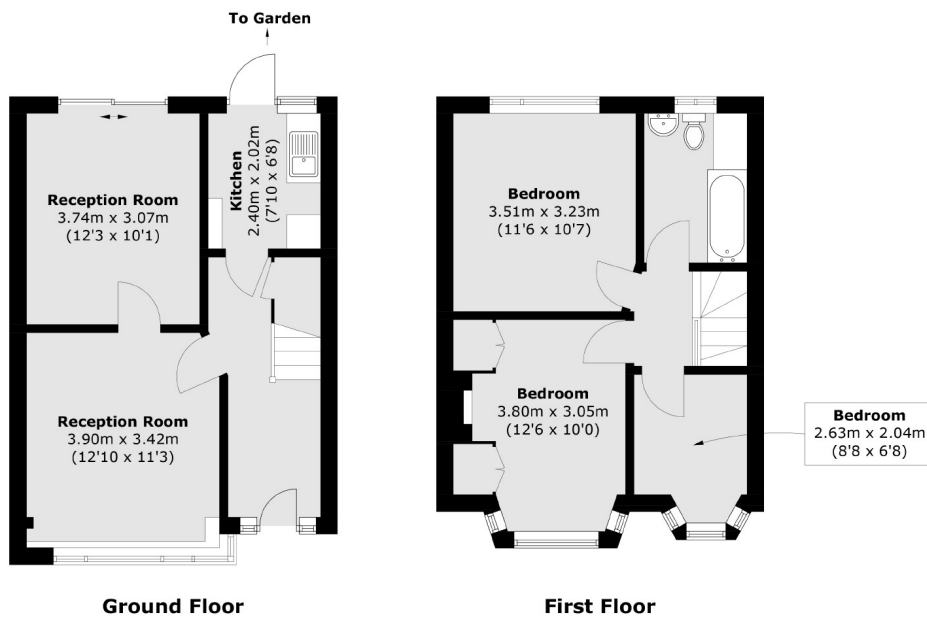
The ground floor accommodation offers two large reception rooms and kitchen. The first floor comprises two double bedrooms, single bedroom and family bathroom.

Hanger Lane, Alperton & Park Royal stations all within walking distance. Well regarded schools locally.

- Three Bedroom • Secluded Garden • No Onward Chain •
- Potential To Extend (STPP) • Excellent Transport Links • Well Regarded Schools •







Total area (approx.): 76.6 sq. m (824.5 sq. ft)

Robertson Smith & Kempson Ealing Sales  
1 The Broadway, London,  
W5 2NT  
020 8840 7677  
ealingsales@robertsonsmithandkempson.co.uk

Energy Rating: D. We aim to make our particulars both accurate and reliable. However they are not guaranteed; nor do they form part of an offer or contract. If you require clarification on any points then please contact us, especially if you're traveling some distance to view. Please note that appliances and heating systems have not been tested and therefore no warranties can be given as to their good working order.