



## The Grove, W5

£1,500,000

In 1962, this stunning house featured on the BBC series *Bucknell's House*. Bought for £2,250, the nation was engrossed as Barry Bucknell renovated the house over 39 weeks.

Now, we're delighted to present this recently renovated property boasting over 1500 sq ft. Attractively offered to the market with no onward chain.

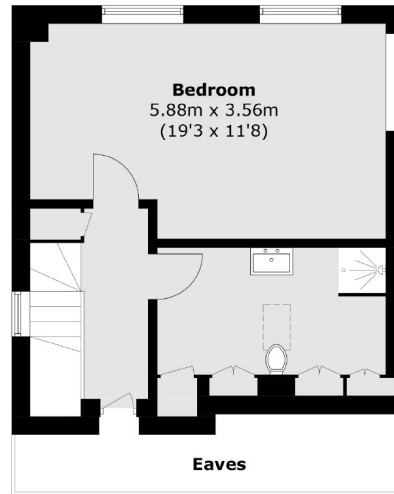


The raised ground floor comprises a WC and huge open plan kitchen/diner with bespoke units and filled with natural light throughout. The first floor accommodation offers two double bedrooms, both of which are en-suite. The loft includes another double bedroom and a luxurious shower-room.

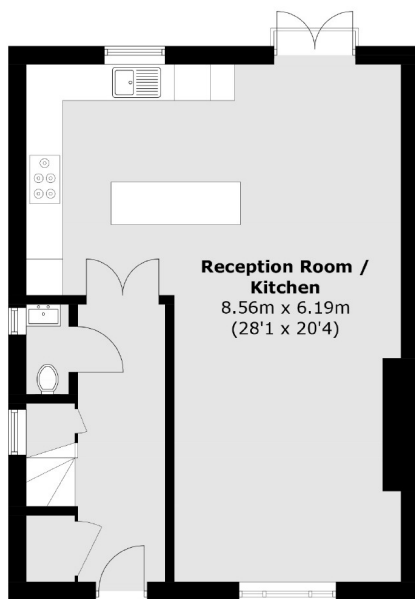
Ideally located for the Elizabeth Line at Ealing station which provides easy access to central London. A range of parks and amenities locally for families.

- Chain Free • Three Double Bedrooms • Elizabeth Line (Ealing) •
- Stunning Condition • Share Of Freehold • Excellent School Catchments •

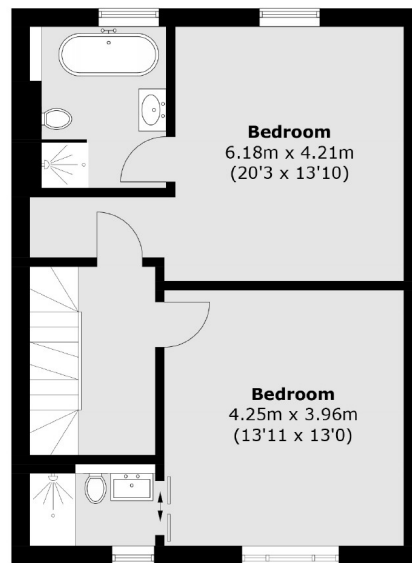




**Second Floor**



**Raised Ground Floor**



**First Floor**

Total area (approx.): 143.6 sq. m (1,545.7 sq. ft)  
(Excluding Eaves)

Robertson Smith & Kempson Northfields Sales  
116 Northfield Avenue,  
London, W13 9RT  
020 8566 2340  
northfieldssales@robertsonsmithandkempson.co.uk

Energy Rating: . We aim to make our particulars both accurate and reliable. However they are not guaranteed; nor do they form part of an offer or contract. If you require clarification on any points then please contact us, especially if you're traveling some distance to view. Please note that appliances and heating systems have not been tested and therefore no warranties can be given as to their good working order.