



## Campion Court, HA0

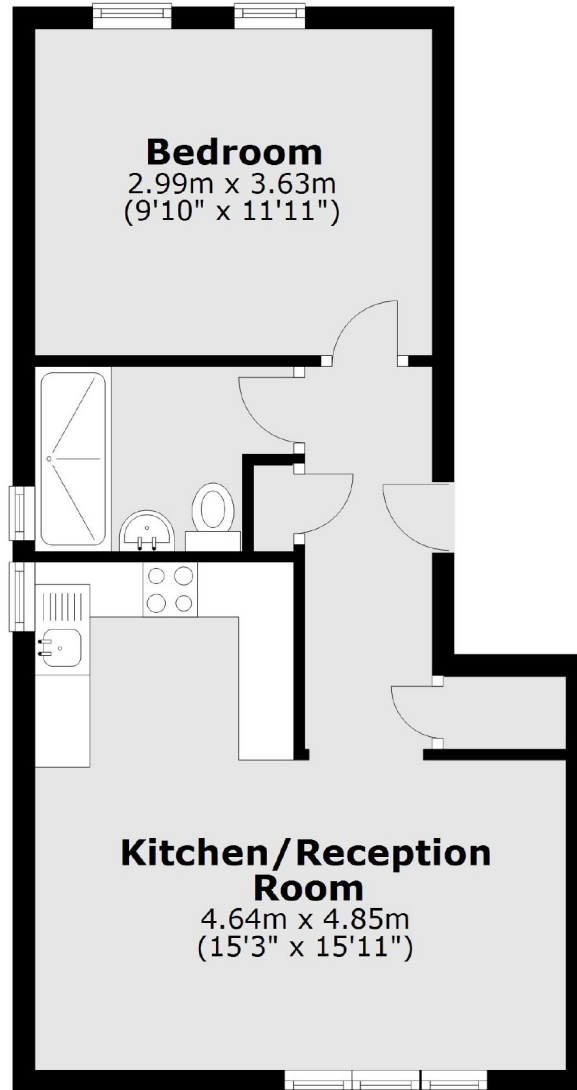
£325,000

A recently renovated ground floor one bedroom flat in a quiet and residential purpose-built development. With a separate kitchen and living area, allocated parking and a share of the freehold.

Half a mile from Alperton station (Piccadilly line) and half mile from Hanger Lane station (Central line). The North Circular and A40 are nearby.

- Share Of Freehold • Allocated Parking Space • Ground Floor •
- Ample Storage • Quiet Location • Recently Renovated •

## Ground Floor



Total area: approx. 38.9 sq. metres (418.9 sq. feet)

Robertson Smith & Kempson Northfields Sales  
116 Northfield Avenue,  
London, W13 9RT  
020 8566 2340  
[northfieldssales@robertsonsmithandkempson.co.uk](mailto:northfieldssales@robertsonsmithandkempson.co.uk)

Energy Rating: C. We aim to make our particulars both accurate and reliable. However they are not guaranteed; nor do they form part of an offer or contract. If you require clarification on any points then please contact us, especially if you're traveling some distance to view. Please note that appliances and heating systems have not been tested and therefore no warranties can be given as to their good working order.