

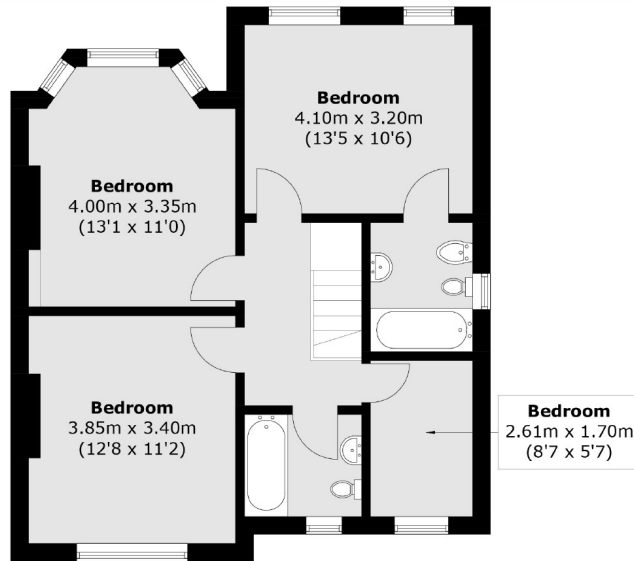


Argyle Road, W13

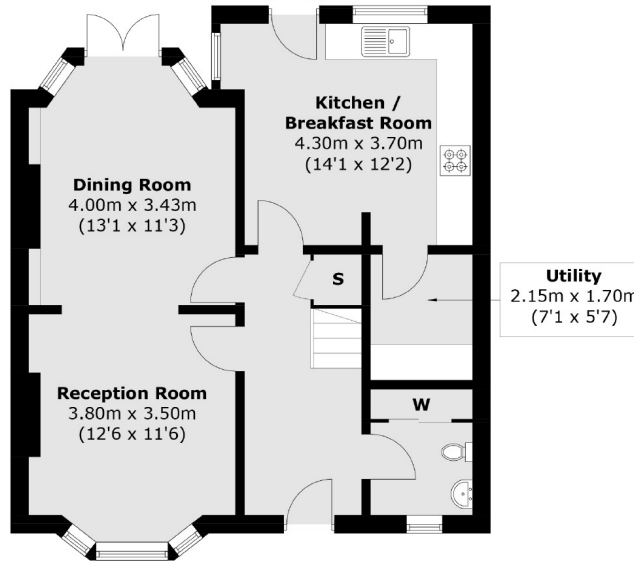
£865 pw (£3,750 pcm)

This end of terrace house has a through lounge, a modern kitchen/diner with a separate utility room and a large cloakroom. There are also four double bedrooms (one en suite), a family bathroom, off-street parking and a west-facing garden.

Argyle Road is close to the open spaces of Scotch Common and only moments away from ever popular Pitshanger Village.



First Floor



Ground Floor

Total area (approx.): 117.5 sq. m (1,264.7 sq. ft)

Robertson Smith & Kempson Ealing Lettings
1 The Broadway, London, W5
2NT
020 8840 7885
ealinglettings@robertsonsmithandkempson.co.uk

Energy Rating: C. We aim to make our particulars both accurate and reliable. However they are not guaranteed; nor do they form part of an offer or contract. If you require clarification on any points then please contact us, especially if you're traveling some distance to view. Please note that appliances and heating systems have not been tested and therefore no warranties can be given as to their good working order.