



## Ealing Village, W5

£475,000

A two double bedroom share of freehold ground floor flat attractively offered onto the market with no onward chain.



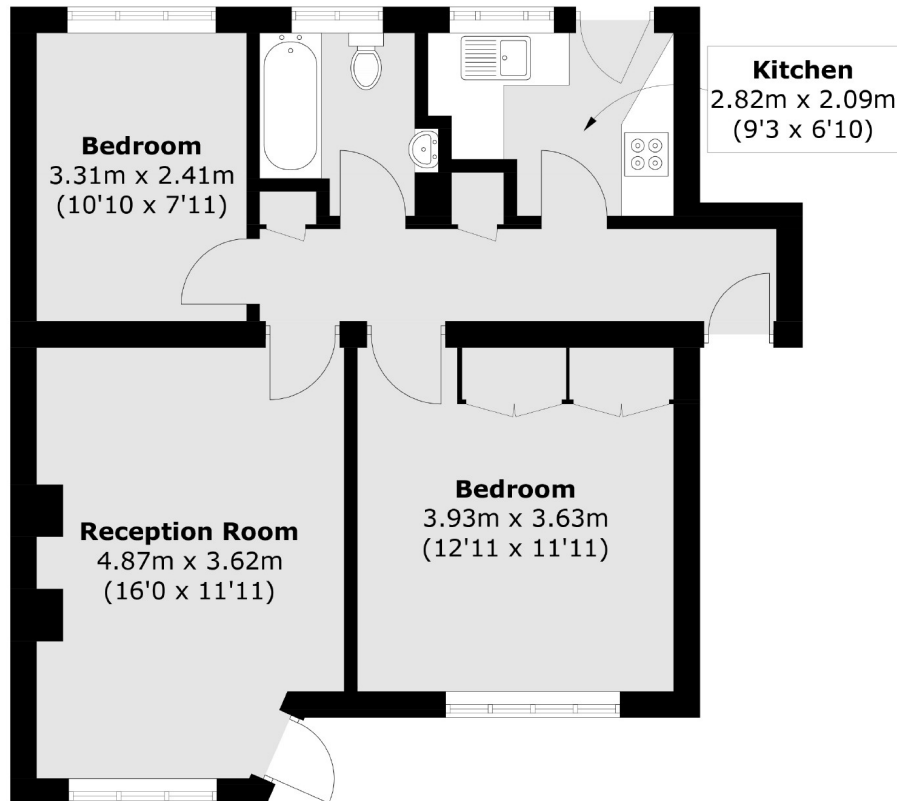
A bright and airy flat comprising two double bedrooms, bathroom, kitchen and large reception room.

Ealing Broadway station within walking distance providing excellent transport links to Central London on the Elizabeth Line. North Ealing & Ealing Common stations within walking distance. Well regarded schools locally to choose from.

- Share Of Freehold • Gated Community • Two Double Bedrooms •
- No Onward Chain • Ground Floor • Elizabeth Line •







Total area (approx.): 59.5sq. m (640.4 sq. ft)

Robertson Smith & Kempson Northfields Sales  
116 Northfield Avenue,  
London, W13 9RT  
020 8566 2340  
[northfieldssales@robertsonsmithandkempson.co.uk](mailto:northfieldssales@robertsonsmithandkempson.co.uk)

Energy Rating: D. We aim to make our particulars both accurate and reliable. However they are not guaranteed; nor do they form part of an offer or contract. If you require clarification on any points then please contact us, especially if you're traveling some distance to view. Please note that appliances and heating systems have not been tested and therefore no warranties can be given as to their good working order.