



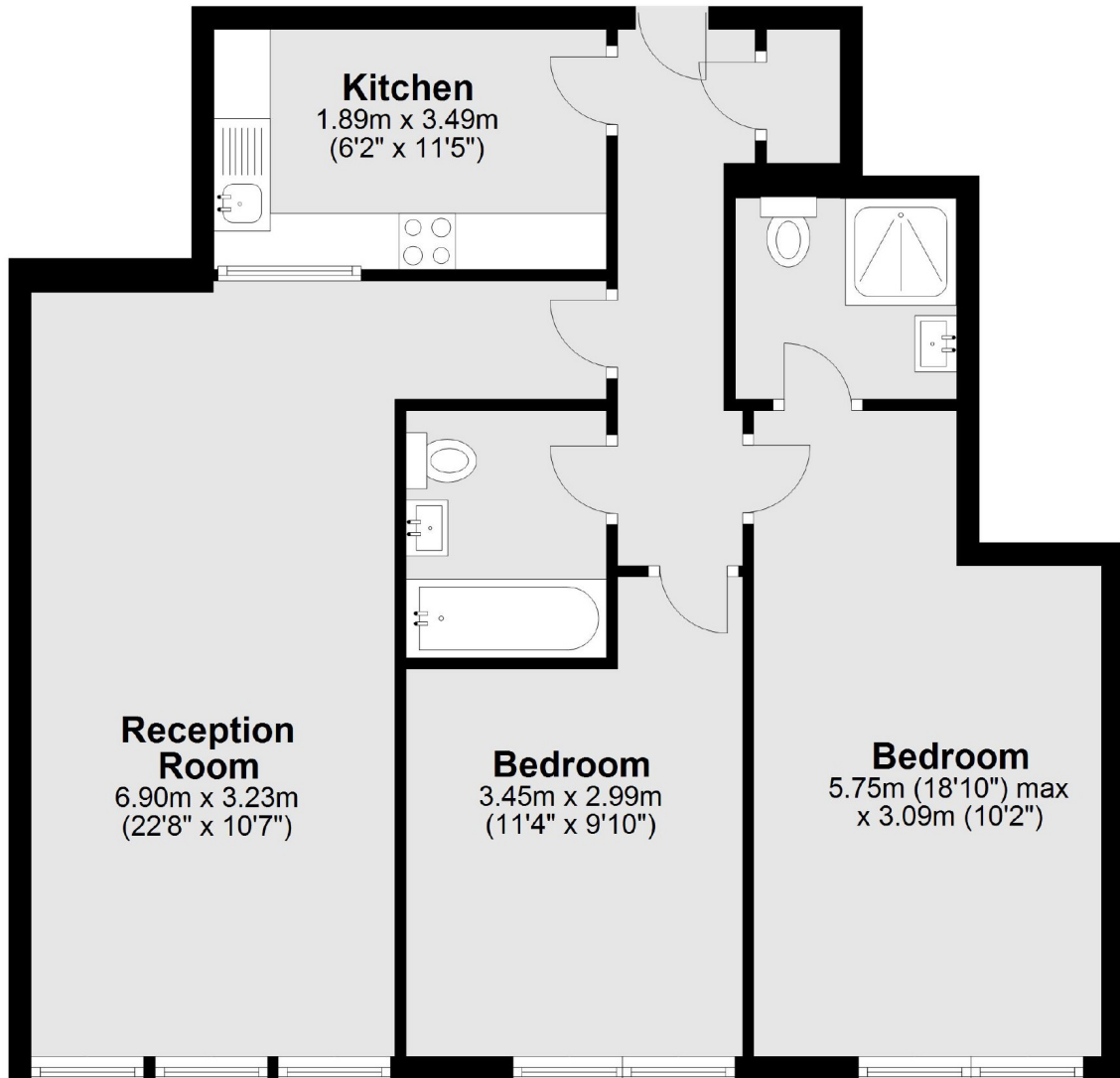
Brunswick Road, W5

£575,000

This first floor flat has a well-fitted kitchen, two double bedrooms, two bathrooms, large reception room and ample storage. The flat has access to a residents gym, underground parking space and comes with no onward chain.

Greystoke House is in the popular Brunswick area, ideal for school catchments, Pitshanger Lane, Hanger Lane station and the A40. Ealing Broadway is within easy access.

First Floor



Total area: approx. 75.6 sq. metres (814.2 sq. feet)

Robertson Smith & Kempson Northfields Sales
116 Northfield Avenue,
London, W13 9RT
020 8566 2340
northfieldssales@robertsonsmithandkempson.co.uk

Energy Rating: C. We aim to make our particulars both accurate and reliable. However they are not guaranteed; nor do they form part of an offer or contract. If you require clarification on any points then please contact us, especially if you're traveling some distance to view. Please note that appliances and heating systems have not been tested and therefore no warranties can be given as to their good working order.