



Queens Walk, W5

£475,000

With no onward chain, this two double bedroom top floor flat is ideal for first time buyers and investors alike. With a separate kitchen, living area, bathroom and WC. The flat has access to communal gardens and comes with off-street parking and a garage.

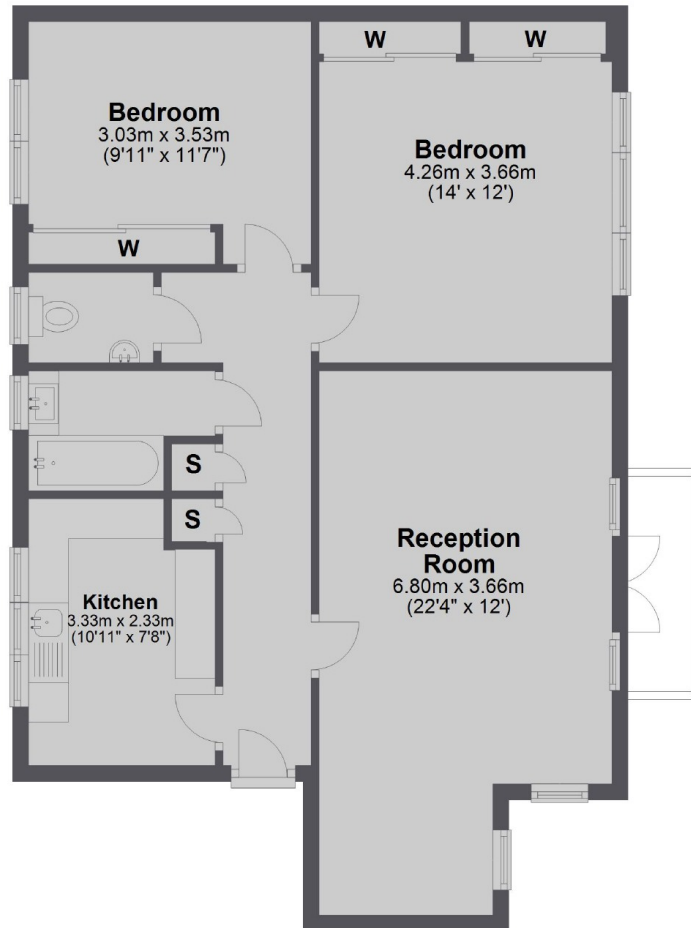


Queens Walk is only moments away from Pitshanger Village and under a mile from Ealing Broadway (Central and District lines, Mainline and Elizabeth line) station.

- Two Double Bedrooms • Separate Kitchen • Bathroom & WC •
- Garage & Parking • Communal Gardens • No Onward Chain •



Second Floor



Total area: approx. 71.6 sq. metres (770.2 sq. feet)

Robertson Smith & Kempson Northfields Sales
116 Northfield Avenue,
London, W13 9RT
020 8566 2340
northfieldssales@robertsonsmithandkempson.co.uk

Energy Rating: D. We aim to make our particulars both accurate and reliable. However they are not guaranteed; nor do they form part of an offer or contract. If you require clarification on any points then please contact us, especially if you're traveling some distance to view. Please note that appliances and heating systems have not been tested and therefore no warranties can be given as to their good working order.