

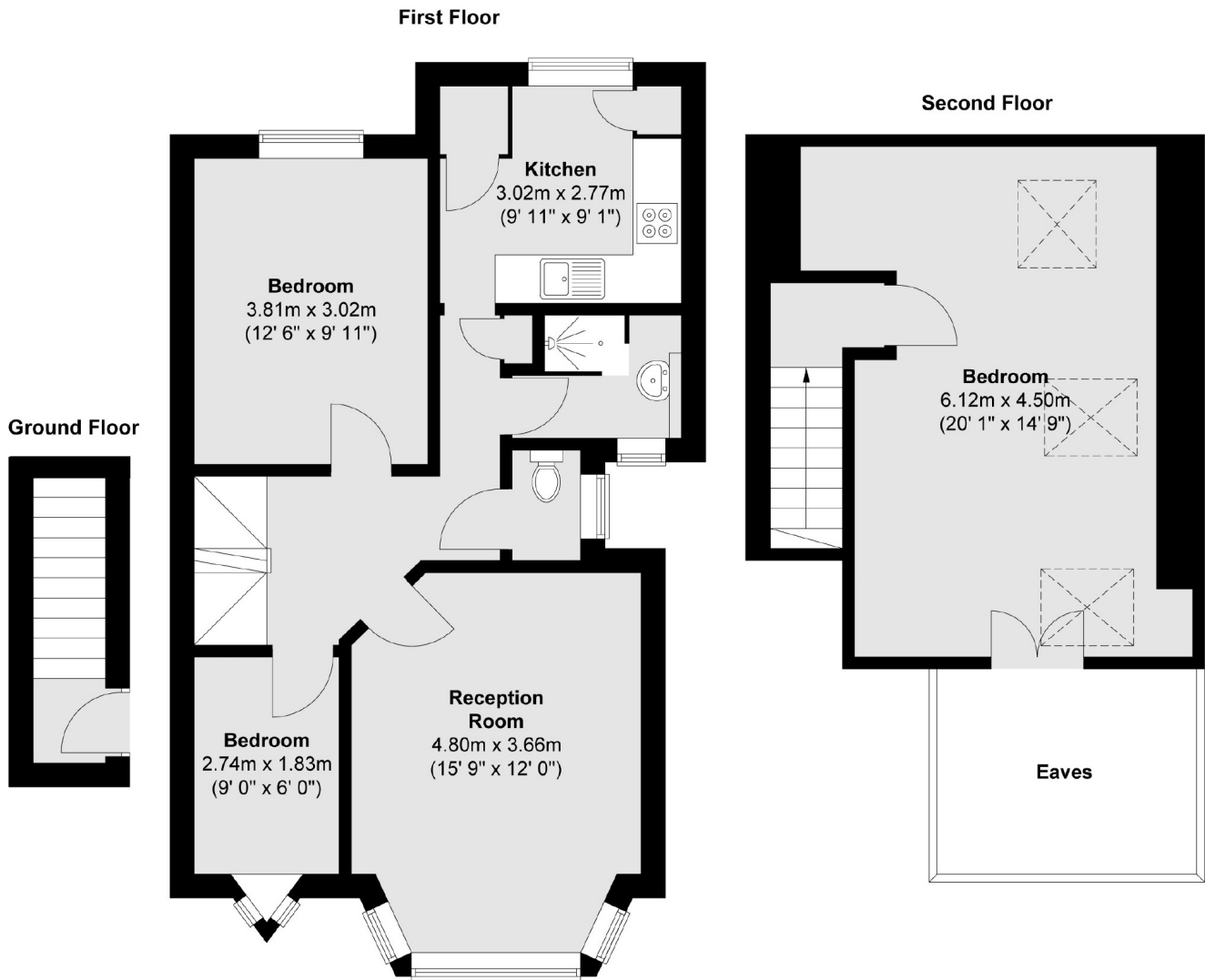


## Drayton Bridge Road, W7

£484 pw (£2,100 pcm)

This cosy three bedroom upper floor flat has a large double reception room, a separate kitchen, two double bedrooms and one single bedroom.

Conveniently located for various bus links to Ealing and Greenford, Hanwell main line station (Elizabeth line), Drayton Green station and well regarded schools, including Hobbayne primary and Drayton Manor high school.



Total area (approx.) : 91.2 sq. m (981 sq. ft)

Robertson Smith & Kempson Ealing Lettings  
1 The Broadway, London, W5  
2NT  
020 8840 7885  
ealinglettings@robertsonsmithandkempson.co.uk

Energy Rating: . We aim to make our particulars both accurate and reliable. However they are not guaranteed; nor do they form part of an offer or contract. If you require clarification on any points then please contact us, especially if you're traveling some distance to view. Please note that appliances and heating systems have not been tested and therefore no warranties can be given as to their good working order.