



Argyle Road, W13

£550,000

A beautifully presented, well proportioned three-bedroom top floor flat, filled with natural light throughout, in an exceptional location. This property is attractively offered to the market with no onward chain and share of freehold.



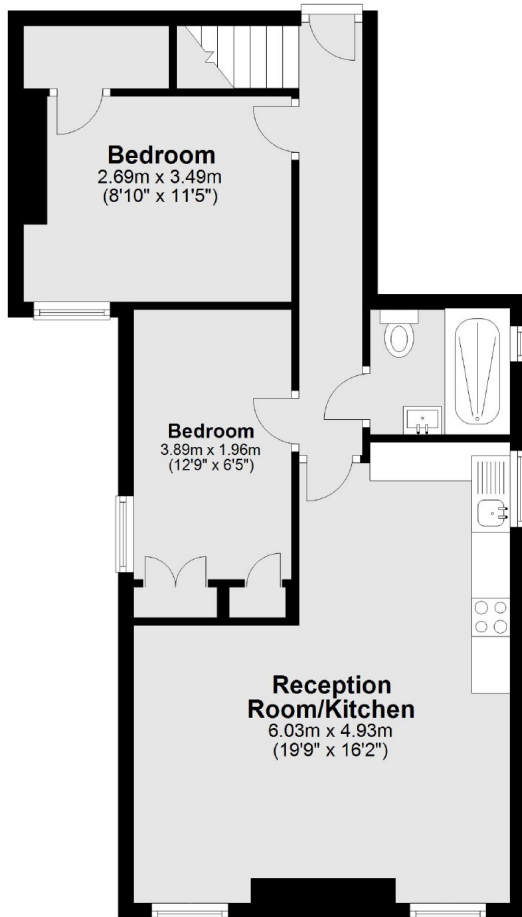
Boasting nearly 997 sq ft of space, this three-bedroom, two-bathroom flat is a must for early viewing. An amazing aspect and setting from the spacious reception room.

Within a mile of West Ealing (Elizabeth Line) station and close to a range of local parks and the award winning high street in Pitshanger Village with its shops, cafés and restaurants.

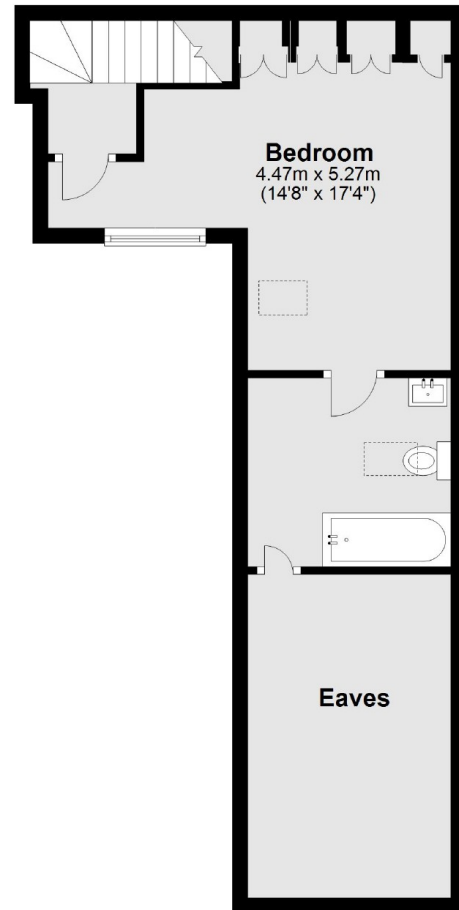
- Three Bedrooms • Share of freehold • No Onward Chain •
- Ideal Location • Great Transport Links • Local Parks •



First Floor



Second Floor



Total area: approx. 92.4 sq. metres (994.6 sq. feet)

Robertson Smith & Kempson Northfields Sales
116 Northfield Avenue,
London, W13 9RT
020 8566 2340
northfieldssales@robertsonsmithandkempson.co.uk

Energy Rating: C. We aim to make our particulars both accurate and reliable. However they are not guaranteed; nor do they form part of an offer or contract. If you require clarification on any points then please contact us, especially if you're traveling some distance to view. Please note that appliances and heating systems have not been tested and therefore no warranties can be given as to their good working order.