



Templewood, W13

£692 pw (£3,000 pcm)

This five bedroom townhouse has been fully refurbished in recent years and is in excellent condition. The master bedroom has an en suite Jack and Jill bathroom and there are a further three double bedrooms with a single room/office space for those working from home. The property also has a driveway.



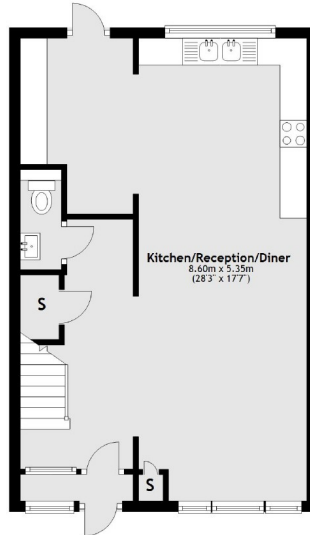
This five bedroom townhouse has been fully refurbished in recent years and is in excellent condition. The master bedroom has an en suite Jack and Jill bathroom and there are a further three double bedrooms with a single room/office space for those working from home. The property also has a driveway.

Located conveniently for Pitshanger Village and Ealing Broadway for the Central and District lines as well as the new Elizabeth line and mainline services. Also close to a range of excellent schooling options.

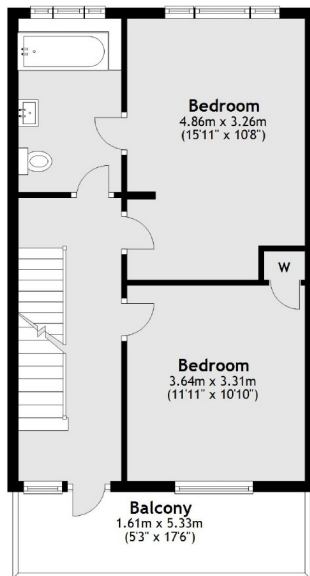
- Close To Pitshanger • Townhouse • Five Bedrooms •
 - Open Plan Kitchen • Utility Area • Off-Street Parking •
-



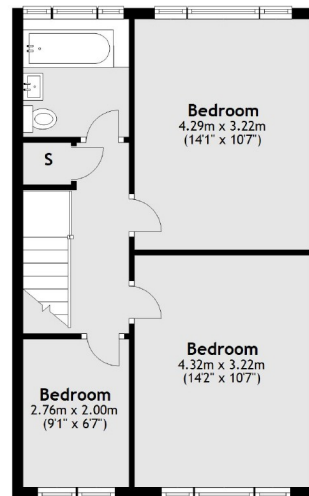
Ground Floor



First Floor



Second Floor



Total area: approx. 138.1 sq. metres (1486.4 sq. feet)

Robertson Smith & Kempson Ealing Lettings
1 The Broadway, London, W5
2NT
020 8840 7885
ealinglettings@robertsonsmithandkempson.co.uk

Energy Rating: E. We aim to make our particulars both accurate and reliable. However they are not guaranteed; nor do they form part of an offer or contract. If you require clarification on any points then please contact us, especially if you're traveling some distance to view. Please note that appliances and heating systems have not been tested and therefore no warranties can be given as to their good working order.