

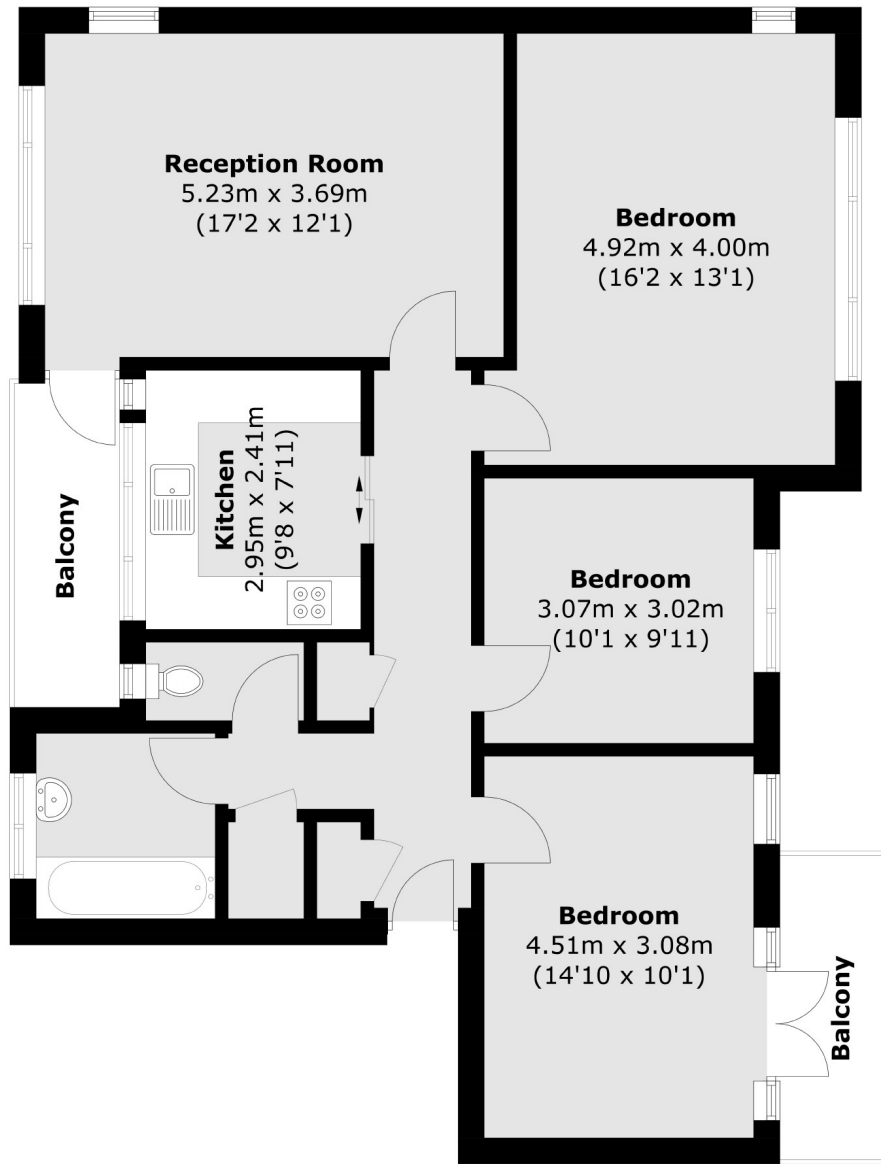


Meadway Court, W5

£565 pw (£2,450 pcm)

This three double bedroom apartment has a spacious lounge, contemporary kitchen and a bathroom with separate WC. The property also has two balconies, a communal garden and a garage.

The Ridings is less than a mile from North Ealing station and less than half a mile from Park Royal (Piccadilly line) and Hanger Lane (Central line) stations.



Total area (approx.): 89.3 sq. m (961.2 sq. ft)
Balcony area (approx.): 8.7 sq. m (93.6 sq. ft)

Robertson Smith & Kempson Ealing Lettings
1 The Broadway, London, W5
2NT
020 8840 7885
ealinglettings@robertsonsmithandkempson.co.uk

Energy Rating: E. We aim to make our particulars both accurate and reliable. However they are not guaranteed; nor do they form part of an offer or contract. If you require clarification on any points then please contact us, especially if you're traveling some distance to view. Please note that appliances and heating systems have not been tested and therefore no warranties can be given as to their good working order.