



## Montpelier Road, W5

£400,000

A large one bedroom flat with share of freehold, communal gardens and a private garage. This beautifully presented first floor flat has some lovely period features and a newly extended long lease.





Filled with natural light throughout, the property comprises a large double bedroom, living room, kitchen and bathroom, with plenty of built-in storage.

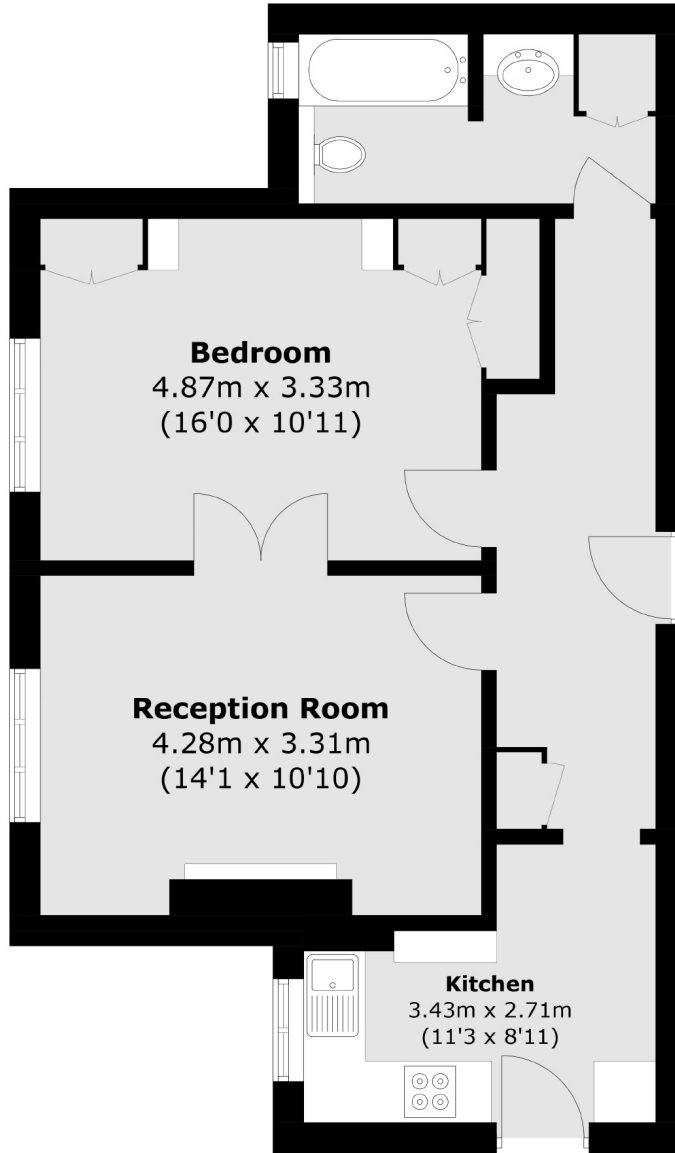
Situated in a desirable location, the property is a short walk from Montpelier Park, Hanger Hill, Park and Fox Wood, a local nature reserve. Ealing Broadway station (Elizabeth Line, Central/District Lines and National Rail Services) is within walking distance, along with a wide range of shops, restaurants and local amenities. The property is also a short walk from the award-winning Pitshanger Lane, which offers independent shops and community events.

- Share Of Freehold • Communal Gardens • Garage •
- One Double Bedroom • Excellent Transport • Local Parks •









Total area (approx.): 54.2 sq. m (583.4 sq. ft)

Robertson Smith & Kempson Ealing Sales  
1 The Broadway, London,  
W5 2NT  
020 8840 7677  
[ealingsales@robertsonsmithandkempson.co.uk](mailto:ealingsales@robertsonsmithandkempson.co.uk)

Energy Rating: C. We aim to make our particulars both accurate and reliable. However they are not guaranteed; nor do they form part of an offer or contract. If you require clarification on any points then please contact us, especially if you're traveling some distance to view. Please note that appliances and heating systems have not been tested and therefore no warranties can be given as to their good working order.